

Anti-MEIS1 Antibody

Rabbit polyclonal antibody to MEIS1

Catalog # AP60593

Product Information

Application	WB
Primary Accession	O00470
Other Accession	Q60954
Reactivity	Human, Mouse, Rat
Host	Rabbit
Clonality	Polyclonal
Calculated MW	43016

Additional Information

Gene ID	4211
Other Names	Homeobox protein Meis1
Target/Specificity	Recognizes endogenous levels of MEIS1 protein.
Dilution	WB~~WB (1/500 - 1/1000)
Format	Liquid in 0.42% Potassium phosphate, 0.87% Sodium chloride, pH 7.3, 30% glycerol, and 0.09% (W/V) sodium azide.
Storage	Store at -20 °C.Stable for 12 months from date of receipt

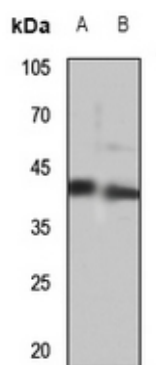
Protein Information

Name	MEIS1
Function	Acts as a transcriptional regulator of PAX6. Acts as a transcriptional activator of PF4 in complex with PBX1 or PBX2. Required for hematopoiesis, megakaryocyte lineage development and vascular patterning. May function as a cofactor for HOXA7 and HOXA9 in the induction of myeloid leukemias.
Cellular Location	Nucleus {ECO:0000255 PROSITE-ProRule:PRU00108}.
Tissue Location	Expressed at low level in normal immunohepatopoietic tissues, including the fetal liver. Expressed in a subset of myeloid leukemia cell lines, with the highest expression seen in those with a megakaryocytic-erythroid phenotype. Also expressed at high levels in the cerebellum

Background

KLH-conjugated synthetic peptide encompassing a sequence within the center region of human MEIS1. The exact sequence is proprietary.

Images



Western blot analysis of MEIS1 expression in mouse kidney (A), rat kidney (B) whole cell lysates.

Please note: All products are 'FOR RESEARCH USE ONLY. NOT FOR USE IN DIAGNOSTIC OR THERAPEUTIC PROCEDURES'.