

Anti-MRPS25 Antibody

Rabbit polyclonal antibody to MRPS25

Catalog # AP60595

Product Information

Application	WB
Primary Accession	P82663
Other Accession	Q9D125
Reactivity	Human, Mouse, Rat
Host	Rabbit
Clonality	Polyclonal
Calculated MW	20116

Additional Information

Gene ID	64432
Other Names	RPMS25; 28S ribosomal protein S25 mitochondrial; MRP-S25; S25mt
Target/Specificity	KLH-conjugated synthetic peptide encompassing a sequence within the C-term region of human MRPS25. The exact sequence is proprietary.
Dilution	WB~~WB (1/500 - 1/1000)
Format	Liquid in 0.42% Potassium phosphate, 0.87% Sodium chloride, pH 7.3, 30% glycerol, and 0.09% (W/V) sodium azide.
Storage	Store at -20 °C.Stable for 12 months from date of receipt

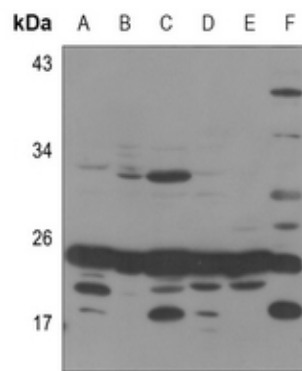
Protein Information

Name	MRPS25
Synonyms	RPMS25
Cellular Location	Mitochondrion.

Background

KLH-conjugated synthetic peptide encompassing a sequence within the C-term region of human MRPS25. The exact sequence is proprietary.

Images



Western blot analysis of MRPS25 expression in mouse kidney (A), mouse lung (B), mouse liver (C), rat kidney (D), rat spleen (E), rat liver (F) whole cell lysates.

Please note: All products are 'FOR RESEARCH USE ONLY. NOT FOR USE IN DIAGNOSTIC OR THERAPEUTIC PROCEDURES'.