

Anti-Musculin Antibody

Rabbit polyclonal antibody to Musculin

Catalog # AP60596

Product Information

Application	WB, IHC
Primary Accession	O60682
Reactivity	Human, Mouse, Monkey, Pig, Chicken, Bovine
Host	Rabbit
Clonality	Polyclonal
Calculated MW	22068

Additional Information

Gene ID	9242
Other Names	ABF1; BHLHA22; Musculin; Activated B-cell factor 1; ABF-1; Class A basic helix-loop-helix protein 22; bHLHa22
Target/Specificity	KLH-conjugated synthetic peptide encompassing a sequence within the C-term region of human Musculin. The exact sequence is proprietary.
Dilution	WB~~WB (1/500 - 1/1000), IHC (1/100 - 1/200) IHC~~WB (1/500 - 1/1000), IHC (1/100 - 1/200)
Format	Liquid in 0.42% Potassium phosphate, 0.87% Sodium chloride, pH 7.3, 30% glycerol, and 0.09% (W/V) sodium azide.
Storage	Store at -20 °C.Stable for 12 months from date of receipt

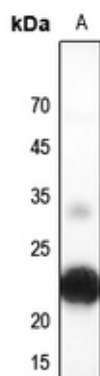
Protein Information

Name	MSC
Synonyms	ABF1, BHLHA22
Function	Transcription repressor capable of inhibiting the transactivation capability of TCF3/E47. May play a role in regulating antigen-dependent B-cell differentiation.
Cellular Location	Nucleus.
Tissue Location	Expressed in lymphoid tissues, B-cell lines and activated B-cells

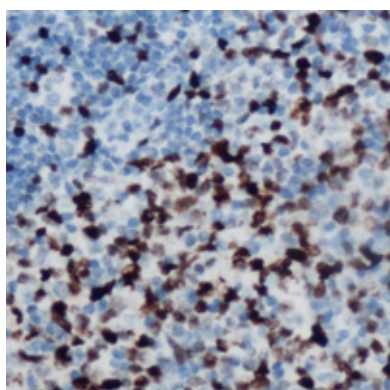
Background

KLH-conjugated synthetic peptide encompassing a sequence within the C-term region of human Musculin. The exact sequence is proprietary.

Images



Western blot analysis of Musculin expression in mouse brain (A) whole cell lysates.



Immunohistochemical analysis of Musculin staining in human lymphoma formalin fixed paraffin embedded tissue section. The section was pre-treated using heat mediated antigen retrieval with sodium citrate buffer (pH 6.0). The section was then incubated with the antibody at room temperature and detected using an HRP conjugated compact polymer system. DAB was used as the chromogen. The section was then counterstained with haematoxylin and mounted with DPX.

Please note: All products are 'FOR RESEARCH USE ONLY. NOT FOR USE IN DIAGNOSTIC OR THERAPEUTIC PROCEDURES'.