

Anti-MYBL2 Antibody

Rabbit polyclonal antibody to MYBL2

Catalog # AP60598

Product Information

Application	WB, IF/IC
Primary Accession	P10244
Other Accession	P48972
Reactivity	Human, Mouse, Rat, Monkey, Chicken
Host	Rabbit
Clonality	Polyclonal
Calculated MW	78764

Additional Information

Gene ID	4605
Other Names	BMYP; Myb-related protein B; B-Myb; Myb-like protein 2
Target/Specificity	KLH-conjugated synthetic peptide encompassing a sequence within the C-term region of human MYBL2. The exact sequence is proprietary.
Dilution	WB~~WB (1/500 - 1/1000), IF/IC (1/100 - 1/500) IF/IC~~N/A
Format	Liquid in 0.42% Potassium phosphate, 0.87% Sodium chloride, pH 7.3, 30% glycerol, and 0.09% (W/V) sodium azide.
Storage	Store at -20 °C.Stable for 12 months from date of receipt

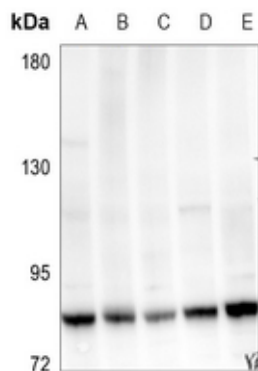
Protein Information

Name	MYBL2
Synonyms	BMYP
Function	Transcription factor involved in the regulation of cell survival, proliferation, and differentiation. Transactivates the expression of the CLU gene.
Cellular Location	Nucleus.

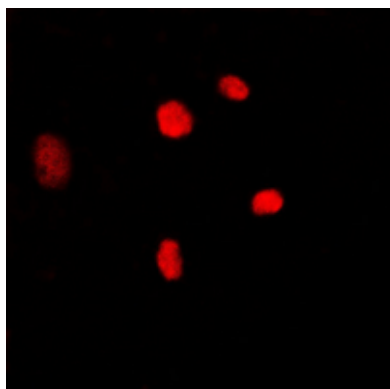
Background

KLH-conjugated synthetic peptide encompassing a sequence within the C-term region of human MYBL2. The exact sequence is proprietary.

Images



Western blot analysis of MYBL2 expression in Panc1 (A), MEF (B), SHSY5Y (C), Jurkat (D), K562 (E) whole cell lysates.



Immunofluorescent analysis of MYBL2 staining in K562 cells. Formalin-fixed cells were permeabilized with 0.1% Triton X-100 in TBS for 5-10 minutes and blocked with 3% BSA-PBS for 30 minutes at room temperature. Cells were probed with the primary antibody in 3% BSA-PBS and incubated overnight at 4 °C in a humidified chamber. Cells were washed with PBST and incubated with a DyLight 594-conjugated secondary antibody (red) in PBS at room temperature in the dark.

Please note: All products are 'FOR RESEARCH USE ONLY. NOT FOR USE IN DIAGNOSTIC OR THERAPEUTIC PROCEDURES'.