

Anti-Neuromedin U Antibody

Rabbit polyclonal antibody to Neuromedin U
Catalog # AP60600

Product Information

Application	WB
Primary Accession	P48645
Reactivity	Human, Rat
Host	Rabbit
Clonality	Polyclonal
Calculated MW	19741

Additional Information

Gene ID	10874
Other Names	Neuromedin-U
Target/Specificity	KLH-conjugated synthetic peptide encompassing a sequence within the C-term region of human Neuromedin U. The exact sequence is proprietary.
Dilution	WB~~WB (1/500 - 1/1000)
Format	Liquid in 0.42% Potassium phosphate, 0.87% Sodium chloride, pH 7.3, 30% glycerol, and 0.09% (W/V) sodium azide.
Storage	Store at -20 °C.Stable for 12 months from date of receipt

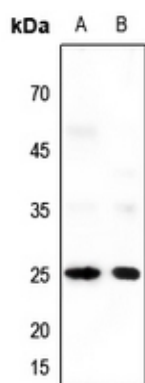
Protein Information

Name	NMU
Function	[Neuromedin-U-25]: Ligand for receptors NMUR1 and NMUR2 (By similarity). Stimulates muscle contractions of specific regions of the gastrointestinal tract. In humans, NmU stimulates contractions of the ileum and urinary bladder.
Cellular Location	Secreted.
Tissue Location	Expressed throughout the enteric nervous system with highest levels being found in the jejunum

Background

KLH-conjugated synthetic peptide encompassing a sequence within the C-term region of human Neuromedin U. The exact sequence is proprietary.

Images



Western blot analysis of Neuromedin U expression in HeLa (A), A549 (B) whole cell lysates.

Please note: All products are 'FOR RESEARCH USE ONLY. NOT FOR USE IN DIAGNOSTIC OR THERAPEUTIC PROCEDURES'.