

# Anti-P2Y8 Antibody

Rabbit polyclonal antibody to P2Y8

Catalog # AP60604

## Product Information

Application	WB, IF/IC
Primary Accession	<a href="#">Q86VZ1</a>
Reactivity	Human, Mouse, Rat
Host	Rabbit
Clonality	Polyclonal
Calculated MW	40635

## Additional Information

Gene ID	286530
Other Names	P2Y purinoceptor 8; P2Y8
Target/Specificity	KLH-conjugated synthetic peptide encompassing a sequence within the center region of human P2Y8. The exact sequence is proprietary.
Dilution	WB~~WB (1/500 - 1/1000), IF/IC (1/100 - 1/500) IF/IC~~N/A
Format	Liquid in 0.42% Potassium phosphate, 0.87% Sodium chloride, pH 7.3, 30% glycerol, and 0.09% (W/V) sodium azide.
Storage	Store at -20 °C.Stable for 12 months from date of receipt

## Protein Information

Name	P2RY8 {ECO:0000303   PubMed:30842656, ECO:0000312   HGNC:HGNC:15524}
Function	<p>G protein-coupled receptor for S-geranylgeranyl-glutathione (GGG), an endogenous metabolite present in lymphoid tissues. Couples the binding of GGG to the activation of GNA13 and downstream repression of AKT activation in lymphocytes defining their positioning and growth within lymphoid organs (PubMed:<a href="#">25274307</a>, PubMed:<a href="#">30842656</a>, PubMed:<a href="#">34088745</a>). In lymphoid follicles, confines B cells and follicular helper T cells in germinal centers (GCs) in response to GGG local gradients established by GGT5 (via GGG catabolism) and ABCC1 (via extracellular transport) with lower concentrations of GGG found in the follicular dendritic cell network region around which germinal centers are formed (PubMed:<a href="#">25274307</a>, PubMed:<a href="#">30842656</a>, PubMed:<a href="#">34088745</a>). In the bone marrow, also in response to GGG gradients established by GGT5 and ABCC1, it restricts chemotactic transmigration of B cells, T cells and NK cells from blood vessels to the bone marrow parenchyma (PubMed:<a href="#">30842656</a>, PubMed:<a href="#">34088745</a>). Contributes to GNA13-dependent pathway that suppresses GC B cell growth (PubMed:<a href="#">25274307</a>).</p>

**Cellular Location**

Cell membrane; Multi-pass membrane protein

**Tissue Location**

Barely detectable in normal blood leukocytes. Weaker expression was seen in heart, kidney and lung. Not detected in brain (PubMed:11004484, PubMed:15466006). Expressed in B cells and follicular helper T cells in germinal centers (at protein level) (PubMed:30842656).

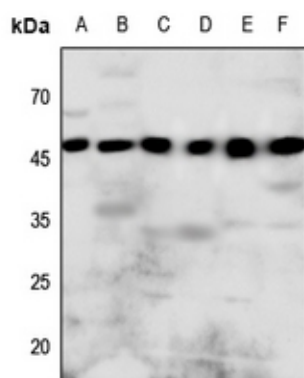
**Background**

---

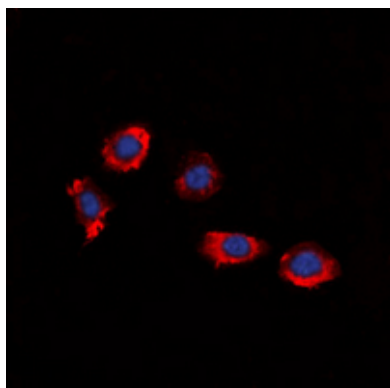
KLH-conjugated synthetic peptide encompassing a sequence within the center region of human P2Y8. The exact sequence is proprietary.

**Images**

---



Western blot analysis of P2Y8 expression in Hela (A), mouse lung (B), mouse heart (C), mouse kidney (D), rat heart (E), rat kidney (F) whole cell lysates.



Immunofluorescent analysis of P2Y8 staining in HuvEc cells. Formalin-fixed cells were permeabilized with 0.1% Triton X-100 in TBS for 5-10 minutes and blocked with 3% BSA-PBS for 30 minutes at room temperature. Cells were probed with the primary antibody in 3% BSA-PBS and incubated overnight at 4 °C in a humidified chamber. Cells were washed with PBST and incubated with a DyLight 594-conjugated secondary antibody (red) in PBS at room temperature in the dark. DAPI was used to stain the cell nuclei (blue).

Please note: All products are 'FOR RESEARCH USE ONLY. NOT FOR USE IN DIAGNOSTIC OR THERAPEUTIC PROCEDURES'.