

Anti-MYPT1 (pT853) Antibody

Rabbit polyclonal antibody to MYPT1 (pT853)

Catalog # AP60611

Product Information

| | |
|-------------------|---------------------------------------|
| Application | WB, IHC |
| Primary Accession | O14974 |
| Other Accession | Q9DBR7 |
| Reactivity | Human, Mouse, Rat, Zebrafish, Chicken |
| Host | Rabbit |
| Clonality | Polyclonal |
| Calculated MW | 115281 |

Additional Information

| | |
|--------------------|---|
| Gene ID | 4659 |
| Other Names | MBS; MYPT1; Protein phosphatase 1 regulatory subunit 12A; Myosin phosphatase-targeting subunit 1; Myosin phosphatase target subunit 1; Protein phosphatase myosin-binding subunit |
| Target/Specificity | Recognizes endogenous levels of MYPT1 (pT853) protein. |
| Dilution | WB~~WB (1/500 - 1/1000), IHC (1/100 - 1/200) IHC~~WB (1/500 - 1/1000), IHC (1/100 - 1/200) |
| Format | Liquid in 0.42% Potassium phosphate, 0.87% Sodium chloride, pH 7.3, 30% glycerol, and 0.09% (W/V) sodium azide. |
| Storage | Store at -20 °C.Stable for 12 months from date of receipt |

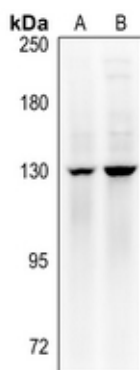
Protein Information

| | |
|-------------------|---|
| Name | PPP1R12A (HGNC:7618) |
| Function | Key regulator of protein phosphatase 1C (PPP1C). Mediates binding to myosin. As part of the PPP1C complex, involved in dephosphorylation of PLK1. Capable of inhibiting HIF1AN-dependent suppression of HIF1A activity. |
| Cellular Location | Cytoplasm. Cytoplasm, cytoskeleton, stress fiber. Note=Also along actomyosin filaments |
| Tissue Location | Expressed in striated muscles, specifically in type 2a fibers (at protein level). |

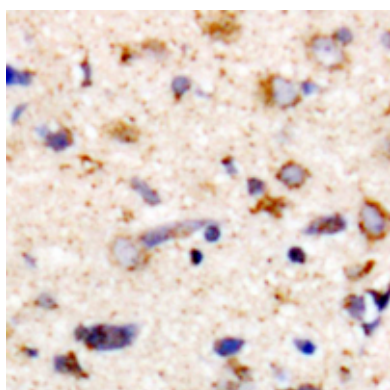
Background

KLH-conjugated synthetic peptide encompassing a sequence within the center region of human MYPT1. The exact sequence is proprietary.

Images



Western blot analysis of MYPT1 (pT853) expression in C6 (A), MCF7 (B) whole cell lysates.



Immunohistochemical analysis of MYPT1 (pT853) staining in human brain formalin fixed paraffin embedded tissue section. The section was pre-treated using heat mediated antigen retrieval with sodium citrate buffer (pH 6.0). The section was then incubated with the antibody at room temperature and detected using an HRP conjugated compact polymer system. DAB was used as the chromogen. The section was then counterstained with haematoxylin and mounted with DPX.

Please note: All products are 'FOR RESEARCH USE ONLY. NOT FOR USE IN DIAGNOSTIC OR THERAPEUTIC PROCEDURES'.