

Anti-PRKD2 Antibody

Rabbit polyclonal antibody to PRKD2

Catalog # AP60617

Product Information

Application	WB, IHC
Primary Accession	Q9BZL6
Other Accession	Q8BZ03
Reactivity	Human, Mouse
Host	Rabbit
Clonality	Polyclonal
Calculated MW	96722

Additional Information

Gene ID	25865
Other Names	PKD2; Serine/threonine-protein kinase D2; nPKC-D2
Target/Specificity	KLH-conjugated synthetic peptide encompassing a sequence within the C-term region of human PRKD2. The exact sequence is proprietary.
Dilution	WB~~WB (1/500 - 1/1000), IHC (1/100 - 1/200) IHC~~WB (1/500 - 1/1000), IHC (1/100 - 1/200)
Format	Liquid in 0.42% Potassium phosphate, 0.87% Sodium chloride, pH 7.3, 30% glycerol, and 0.09% (W/V) sodium azide.
Storage	Store at -20 °C.Stable for 12 months from date of receipt

Protein Information

Name	PRKD2
Synonyms	PKD2
Function	Serine/threonine-protein kinase that converts transient diacylglycerol (DAG) signals into prolonged physiological effects downstream of PKC, and is involved in the regulation of cell proliferation via MAPK1/3 (ERK1/2) signaling, oxidative stress-induced NF-kappa-B activation, inhibition of HDAC7 transcriptional repression, signaling downstream of T-cell antigen receptor (TCR) and cytokine production, and plays a role in Golgi membrane trafficking, angiogenesis, secretory granule release and cell adhesion (PubMed: 14743217 , PubMed: 15604256 , PubMed: 16928771 , PubMed: 17077180 , PubMed: 17951978 , PubMed: 17962809 , PubMed: 18262756 , PubMed: 19001381 , PubMed: 19192391 , PubMed: 23503467 , PubMed: 28428613). May potentiate mitogenesis induced by the neuropeptide

bombesin by mediating an increase in the duration of MAPK1/3 (ERK1/2) signaling, which leads to accumulation of immediate-early gene products including FOS that stimulate cell cycle progression (By similarity). In response to oxidative stress, is phosphorylated at Tyr-438 and Tyr-717 by ABL1, which leads to the activation of PRKD2 without increasing its catalytic activity, and mediates activation of NF-kappa-B (PubMed:[15604256](#), PubMed:[28428613](#)). In response to the activation of the gastrin receptor CCKBR, is phosphorylated at Ser-244 by CSNK1D and CSNK1E, translocates to the nucleus, phosphorylates HDAC7, leading to nuclear export of HDAC7 and inhibition of HDAC7 transcriptional repression of NR4A1/NUR77 (PubMed:[17962809](#)). Upon TCR stimulation, is activated independently of ZAP70, translocates from the cytoplasm to the nucleus and is required for interleukin-2 (IL2) promoter up-regulation (PubMed:[17077180](#)). During adaptive immune responses, is required in peripheral T- lymphocytes for the production of the effector cytokines IL2 and IFNG after TCR engagement and for optimal induction of antibody responses to antigens (By similarity). In epithelial cells stimulated with lysophosphatidic acid (LPA), is activated through a PKC-dependent pathway and mediates LPA-stimulated interleukin-8 (IL8) secretion via a NF-kappa-B-dependent pathway (PubMed:[16928771](#)). During TCR-induced T-cell activation, interacts with and is activated by the tyrosine kinase LCK, which results in the activation of the NFAT transcription factors (PubMed:[19192391](#)). In the trans-Golgi network (TGN), regulates the fission of transport vesicles that are on their way to the plasma membrane and in polarized cells is involved in the transport of proteins from the TGN to the basolateral membrane (PubMed:[14743217](#)). Plays an important role in endothelial cell proliferation and migration prior to angiogenesis, partly through modulation of the expression of KDR/VEGFR2 and FGFR1, two key growth factor receptors involved in angiogenesis (PubMed:[19001381](#)). In secretory pathway, is required for the release of chromogranin-A (CHGA)-containing secretory granules from the TGN (PubMed:[18262756](#)). Downstream of PRKCA, plays important roles in angiotensin-2-induced monocyte adhesion to endothelial cells (PubMed:[17951978](#)). Plays a regulatory role in angiogenesis and tumor growth by phosphorylating a downstream mediator CIB1 isoform 2, resulting in vascular endothelial growth factor A (VEGFA) secretion (PubMed:[23503467](#)).

Cellular Location

Cytoplasm. Cell membrane {ECO:0000250|UniProtKB:Q15139}. Nucleus. Golgi apparatus, trans-Golgi network. Note=Translocation to the cell membrane is required for kinase activation. Accumulates in the nucleus upon CK1-mediated phosphorylation after activation of G-protein-coupled receptors. Nuclear accumulation is regulated by blocking nuclear export of active PRKD2 rather than by increasing import

Tissue Location

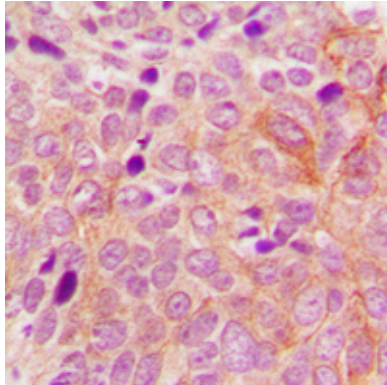
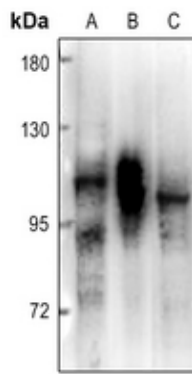
Widely expressed..

Background

KLH-conjugated synthetic peptide encompassing a sequence within the C-term region of human PRKD2. The exact sequence is proprietary.

Images

Western blot analysis of PRKD2 expression in Hela (A), MCF7 (B), AML12 (C) whole cell lysates.



Immunohistochemical analysis of PRKD2 staining in human breast cancer formalin fixed paraffin embedded tissue section. The section was pre-treated using heat mediated antigen retrieval with sodium citrate buffer (pH 6.0). The section was then incubated with the antibody at room temperature and detected using an HRP conjugated compact polymer system. DAB was used as the chromogen. The section was then counterstained with haematoxylin and mounted with DPX.

Please note: All products are 'FOR RESEARCH USE ONLY. NOT FOR USE IN DIAGNOSTIC OR THERAPEUTIC PROCEDURES'.