

# Anti-CD201 Antibody

Rabbit polyclonal antibody to CD201

Catalog # AP60618

## Product Information

---

<b>Application</b>	WB
<b>Primary Accession</b>	<a href="#">Q9UNN8</a>
<b>Reactivity</b>	Human, Rat, Bovine
<b>Host</b>	Rabbit
<b>Clonality</b>	Polyclonal
<b>Calculated MW</b>	26671

## Additional Information

---

<b>Gene ID</b>	10544
<b>Other Names</b>	EPCR; Endothelial protein C receptor; Activated protein C receptor; APC receptor; Endothelial cell protein C receptor; CD201
<b>Target/Specificity</b>	Recognizes endogenous levels of CD201 protein.
<b>Dilution</b>	WB~~WB (1/500 - 1/1000)
<b>Format</b>	Liquid in 0.42% Potassium phosphate, 0.87% Sodium chloride, pH 7.3, 30% glycerol, and 0.09% (W/V) sodium azide.
<b>Storage</b>	Store at -20 °C.Stable for 12 months from date of receipt

## Protein Information

---

<b>Name</b>	PROCR
<b>Synonyms</b>	EPCR
<b>Function</b>	Binds activated protein C. Enhances protein C activation by the thrombin-thrombomodulin complex; plays a role in the protein C pathway controlling blood coagulation.
<b>Cellular Location</b>	Membrane; Single-pass type I membrane protein.
<b>Tissue Location</b>	Expressed strongly in the endothelial cells of arteries and veins in heart and lung, less intensely in capillaries in the lung and skin, and not at all in the endothelium of small vessels of the liver and kidney

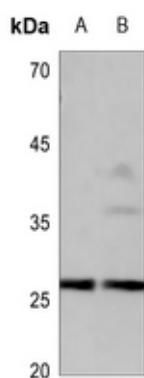
## Background

---

KLH-conjugated synthetic peptide encompassing a sequence within the center region of human CD201. The exact sequence is proprietary.

## Images

---



Western blot analysis of CD201 expression in HEK293T (A), A549 (B) whole cell lysates.

Please note: All products are 'FOR RESEARCH USE ONLY. NOT FOR USE IN DIAGNOSTIC OR THERAPEUTIC PROCEDURES'.