

Anti-PTP alpha Antibody

Rabbit polyclonal antibody to PTP alpha
Catalog # AP60622

Product Information

Application	WB
Primary Accession	P18433
Other Accession	P18052
Reactivity	Human, Mouse, Rat
Host	Rabbit
Clonality	Polyclonal
Calculated MW	90719

Additional Information

Gene ID	5786
Other Names	PTPA; PTPRL2; Receptor-type tyrosine-protein phosphatase alpha; Protein-tyrosine phosphatase alpha; R-PTP-alpha
Target/Specificity	KLH-conjugated synthetic peptide encompassing a sequence within the C-term region of human PTP alpha. The exact sequence is proprietary.
Dilution	WB~~WB (1/500 - 1/1000)
Format	Liquid in 0.42% Potassium phosphate, 0.87% Sodium chloride, pH 7.3, 30% glycerol, and 0.09% (W/V) sodium azide.
Storage	Store at -20 °C.Stable for 12 months from date of receipt

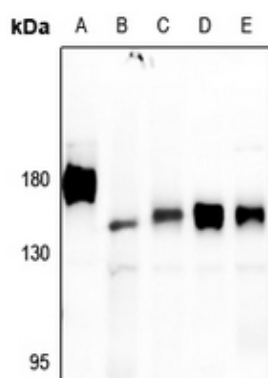
Protein Information

Name	PTPRA
Synonyms	PTPA, PTPRL2
Function	Tyrosine protein phosphatase which is involved in integrin- mediated focal adhesion formation (By similarity). Following integrin engagement, specifically recruits BCAR3, BCAR1 and CRK to focal adhesions thereby promoting SRC-mediated phosphorylation of BRAC1 and the subsequent activation of PAK and small GTPase RAC1 and CDC42 (By similarity).
Cellular Location	Cell membrane; Single-pass type I membrane protein. Cell junction, focal adhesion {ECO:0000250 UniProtKB:P18052}. Note=Localizes to focal adhesion sites following integrin engagement. {ECO:0000250 UniProtKB:P18052}

Background

KLH-conjugated synthetic peptide encompassing a sequence within the C-term region of human PTP alpha. The exact sequence is proprietary.

Images



Western blot analysis of PTP alpha expression in HCT116 (A), Myla2059 (B), C6 (C), CT26 (D), HeLa (E) whole cell lysates.

Please note: All products are 'FOR RESEARCH USE ONLY. NOT FOR USE IN DIAGNOSTIC OR THERAPEUTIC PROCEDURES'.