

# Anti-RAP2C Antibody

Rabbit polyclonal antibody to RAP2C

Catalog # AP60624

## Product Information

---

Application	WB
Primary Accession	<a href="#">Q9Y3L5</a>
Other Accession	<a href="#">Q8BU31</a>
Reactivity	Human, Mouse, Bovine
Host	Rabbit
Clonality	Polyclonal
Calculated MW	20745

## Additional Information

---

Gene ID	57826
Other Names	Ras-related protein Rap-2c
Target/Specificity	Recognizes endogenous levels of RAP2C protein.
Dilution	WB~~WB (1/500 - 1/1000)
Format	Liquid in 0.42% Potassium phosphate, 0.87% Sodium chloride, pH 7.3, 30% glycerol, and 0.09% (W/V) sodium azide.
Storage	Store at -20 °C.Stable for 12 months from date of receipt

## Protein Information

---

Name	RAP2C
Function	Small GTP-binding protein which cycles between a GDP-bound inactive and a GTP-bound active form. May play a role in cytoskeletal rearrangements and regulate cell spreading through activation of the effector TNIK. May play a role in SRE-mediated gene transcription.
Cellular Location	Cytoplasm. Recycling endosome membrane; Lipid-anchor; Cytoplasmic side
Tissue Location	Expressed in liver, skeletal muscle, prostate, uterus, rectum, stomach, and bladder and to a lower extent in brain, kidney, pancreas, and bone marrow. Expressed in mononuclear leukocytes and megakaryocytes.

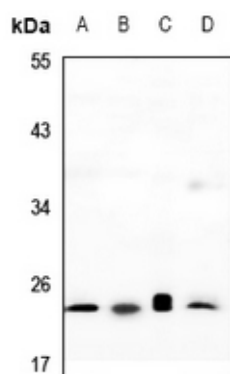
## Background

---

KLH-conjugated synthetic peptide encompassing a sequence within the center region of human RAP2C. The exact sequence is proprietary.

## Images

---



Western blot analysis of RAP2C expression in LO2 (A), PC3 (B), CT26 (C), MEF (D) whole cell lysates.

Please note: All products are 'FOR RESEARCH USE ONLY. NOT FOR USE IN DIAGNOSTIC OR THERAPEUTIC PROCEDURES'.