

# Anti-RPL12 Antibody

Rabbit polyclonal antibody to RPL12

Catalog # AP60626

## Product Information

---

<b>Application</b>	WB, IHC
<b>Primary Accession</b>	<a href="#">P30050</a>
<b>Other Accession</b>	<a href="#">P35979</a>
<b>Reactivity</b>	Human, Mouse, Rat, Pig, Bovine, Drosophila
<b>Host</b>	Rabbit
<b>Clonality</b>	Polyclonal
<b>Calculated MW</b>	17819

## Additional Information

---

<b>Gene ID</b>	6136
<b>Other Names</b>	60S ribosomal protein L12
<b>Target/Specificity</b>	KLH-conjugated synthetic peptide encompassing a sequence within the center region of human RPL12. The exact sequence is proprietary.
<b>Dilution</b>	WB~~WB (1/500 - 1/1000), IHC (1/100 - 1/200) IHC~~WB (1/500 - 1/1000), IHC (1/100 - 1/200)
<b>Format</b>	Liquid in 0.42% Potassium phosphate, 0.87% Sodium chloride, pH 7.3, 30% glycerol, and 0.09% (W/V) sodium azide.
<b>Storage</b>	Store at -20 °C.Stable for 12 months from date of receipt

## Protein Information

---

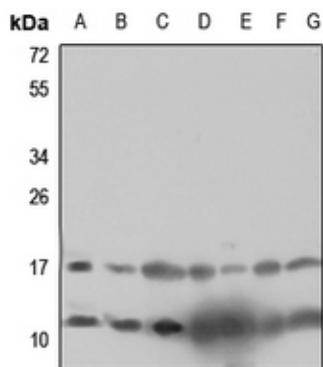
<b>Name</b>	RPL12
<b>Function</b>	Component of the large ribosomal subunit (PubMed: <a href="#">25901680</a> ). The ribosome is a large ribonucleoprotein complex responsible for the synthesis of proteins in the cell (PubMed: <a href="#">25901680</a> ). Binds directly to 26S ribosomal RNA (PubMed: <a href="#">25901680</a> ).
<b>Cellular Location</b>	Cytoplasm

## Background

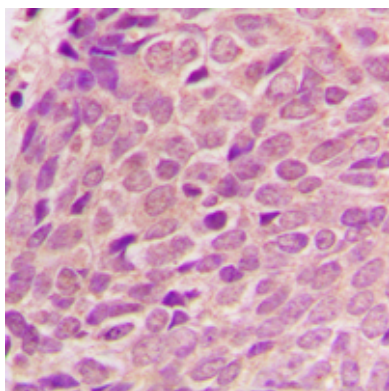
---

KLH-conjugated synthetic peptide encompassing a sequence within the center region of human RPL12. The exact sequence is proprietary.

## Images



Western blot analysis of RPL12 expression in HEK293T (A), HeLa (B), HGC27 (C), mouse liver (D), mouse kidney (E), rat liver (F), rat kidney (G) whole cell lysates.



Immunohistochemical analysis of RPL12 staining in human breast cancer formalin fixed paraffin embedded tissue section. The section was pre-treated using heat mediated antigen retrieval with sodium citrate buffer (pH 6.0). The section was then incubated with the antibody at room temperature and detected using an HRP conjugated compact polymer system. DAB was used as the chromogen. The section was then counterstained with haematoxylin and mounted with DPX.

Please note: All products are 'FOR RESEARCH USE ONLY. NOT FOR USE IN DIAGNOSTIC OR THERAPEUTIC PROCEDURES'.