

Anti-PEDF Antibody

Rabbit polyclonal antibody to PEDF
Catalog # AP60630

Product Information

Application	WB
Primary Accession	P36955
Other Accession	P97298
Reactivity	Human, Mouse, Rat, Monkey, Pig, Bovine
Host	Rabbit
Clonality	Polyclonal
Calculated MW	46312

Additional Information

Gene ID	5176
Other Names	PEDF; Pigment epithelium-derived factor; PEDF; Cell proliferation-inducing gene 35 protein; EPC-1; Serpin F1
Target/Specificity	KLH-conjugated synthetic peptide encompassing a sequence within the center region of human PEDF. The exact sequence is proprietary.
Dilution	WB~~WB (1/500 - 1/1000)
Format	Liquid in 0.42% Potassium phosphate, 0.87% Sodium chloride, pH 7.3, 30% glycerol, and 0.09% (W/V) sodium azide.
Storage	Store at -20 °C.Stable for 12 months from date of receipt

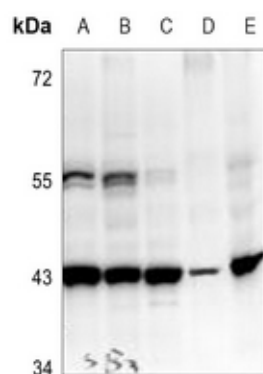
Protein Information

Name	SERPINF1
Synonyms	PEDF
Function	Neurotrophic protein; induces extensive neuronal differentiation in retinoblastoma cells. Potent inhibitor of angiogenesis. As it does not undergo the S (stressed) to R (relaxed) conformational transition characteristic of active serpins, it exhibits no serine protease inhibitory activity.
Cellular Location	Secreted. Melanosome. Note=Enriched in stage I melanosomes
Tissue Location	Retinal pigment epithelial cells and blood plasma.

Background

KLH-conjugated synthetic peptide encompassing a sequence within the center region of human PEDF. The exact sequence is proprietary.

Images



Western blot analysis of PEDF expression in HepG2 (A), A2780 (B), PC3 (C), 3T3L1 (D), H9C2 (E) whole cell lysates.

Please note: All products are 'FOR RESEARCH USE ONLY. NOT FOR USE IN DIAGNOSTIC OR THERAPEUTIC PROCEDURES'.