

Anti-SSTR1 Antibody

Rabbit polyclonal antibody to SSTR1

Catalog # AP60636

Product Information

Application	WB, IF/IC
Primary Accession	P30872
Other Accession	P30873
Reactivity	Human, Mouse, Rat, Monkey, Drosophila
Host	Rabbit
Clonality	Polyclonal
Calculated MW	42686

Additional Information

Gene ID	6751
Other Names	Somatostatin receptor type 1; SS-1-R; SS1-R; SS1R; SRIF-2
Target/Specificity	Recognizes endogenous levels of SSTR1 protein.
Dilution	WB~~WB (1/500 - 1/1000), IF/IC (1/100 - 1/500) IF/IC~~N/A
Format	Liquid in 0.42% Potassium phosphate, 0.87% Sodium chloride, pH 7.3, 30% glycerol, and 0.09% (W/V) sodium azide.
Storage	Store at -20 °C.Stable for 12 months from date of receipt

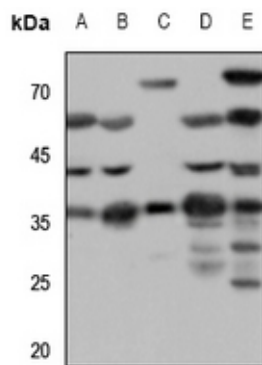
Protein Information

Name	SSTR1
Function	Receptor for somatostatin with higher affinity for somatostatin-14 than -28. This receptor is coupled via pertussis toxin sensitive G proteins to inhibition of adenylyl cyclase. In addition it stimulates phosphotyrosine phosphatase and Na(+)/H(+) exchanger via pertussis toxin insensitive G proteins.
Cellular Location	Cell membrane; Multi-pass membrane protein.
Tissue Location	Fetal kidney, fetal liver, and adult pancreas, brain, lung, jejunum and stomach

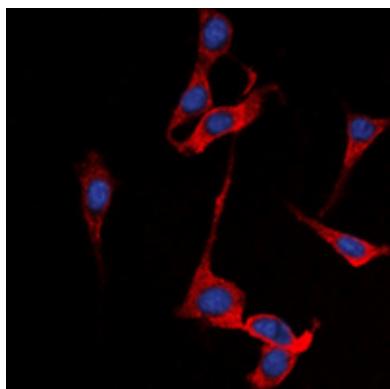
Background

KLH-conjugated synthetic peptide encompassing a sequence within the N-term region of human SSTR1. The exact sequence is proprietary.

Images



Western blot analysis of SSTR1 expression in mouse lung (A), mouse heart (B), mouse liver (C), rat heart (D), rat liver (E) whole cell lysates.



Immunofluorescent analysis of SSTR1 staining in A549 cells. Formalin-fixed cells were permeabilized with 0.1% Triton X-100 in TBS for 5-10 minutes and blocked with 3% BSA-PBS for 30 minutes at room temperature. Cells were probed with the primary antibody in 3% BSA-PBS and incubated overnight at 4 °C in a humidified chamber. Cells were washed with PBST and incubated with a DyLight 594-conjugated secondary antibody (red) in PBS at room temperature in the dark. DAPI was used to stain the cell nuclei (blue).

Please note: All products are 'FOR RESEARCH USE ONLY. NOT FOR USE IN DIAGNOSTIC OR THERAPEUTIC PROCEDURES'.