

# Anti-RB3 Antibody

Rabbit polyclonal antibody to RB3

Catalog # AP60639

## Product Information

---

<b>Application</b>	WB, IHC
<b>Primary Accession</b>	<a href="#">Q9H169</a>
<b>Other Accession</b>	<a href="#">P63042</a>
<b>Reactivity</b>	Human, Mouse, Rat
<b>Host</b>	Rabbit
<b>Clonality</b>	Polyclonal
<b>Calculated MW</b>	22071

## Additional Information

---

<b>Gene ID</b>	81551
<b>Other Names</b>	Stathmin-4; Stathmin-like protein B3; RB3
<b>Target/Specificity</b>	Recognizes endogenous levels of RB3 protein.
<b>Dilution</b>	WB~~WB (1/500 - 1/1000), IHC (1/100 - 1/200) IHC~~WB (1/500 - 1/1000), IHC (1/100 - 1/200)
<b>Format</b>	Liquid in 0.42% Potassium phosphate, 0.87% Sodium chloride, pH 7.3, 30% glycerol, and 0.09% (W/V) sodium azide.
<b>Storage</b>	Store at -20 °C.Stable for 12 months from date of receipt

## Protein Information

---

<b>Name</b>	STMN4
<b>Function</b>	Exhibits microtubule-destabilizing activity.
<b>Cellular Location</b>	Golgi apparatus. Cell projection, growth cone. Cell projection, axon

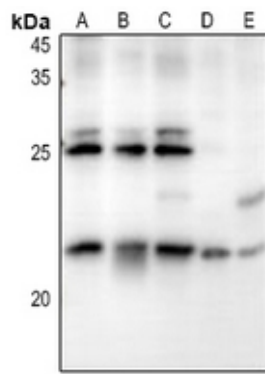
## Background

---

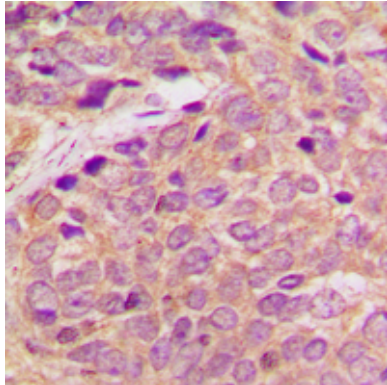
KLH-conjugated synthetic peptide encompassing a sequence within the C-term region of human RB3. The exact sequence is proprietary.

## Images

---



Western blot analysis of RB3 expression in COS7 (A), MCF7 (B), A549 (C), CT26 (D), PC12 (E) whole cell lysates.



Immunohistochemical analysis of RB3 staining in human breast cancer formalin fixed paraffin embedded tissue section. The section was pre-treated using heat mediated antigen retrieval with sodium citrate buffer (pH 6.0). The section was then incubated with the antibody at room temperature and detected using an HRP conjugated compact polymer system. DAB was used as the chromogen. The section was then counterstained with haematoxylin and mounted with DPX.

Please note: All products are 'FOR RESEARCH USE ONLY. NOT FOR USE IN DIAGNOSTIC OR THERAPEUTIC PROCEDURES'.