

Anti-TRAPPC3 Antibody

Rabbit polyclonal antibody to TRAPPC3

Catalog # AP60647

Product Information

Application	WB, IHC
Primary Accession	O43617
Other Accession	O55013
Reactivity	Human, Mouse, Rat
Host	Rabbit
Clonality	Polyclonal
Calculated MW	20274

Additional Information

Gene ID	27095
Other Names	BET3; Trafficking protein particle complex subunit 3; BET3 homolog
Target/Specificity	Recognizes endogenous levels of TRAPPC3 protein.
Dilution	WB~~WB (1/500 - 1/1000), IHC (1/100 - 1/200) IHC~~WB (1/500 - 1/1000), IHC (1/100 - 1/200)
Format	Liquid in 0.42% Potassium phosphate, 0.87% Sodium chloride, pH 7.3, 30% glycerol, and 0.09% (W/V) sodium azide.
Storage	Store at -20 °C.Stable for 12 months from date of receipt

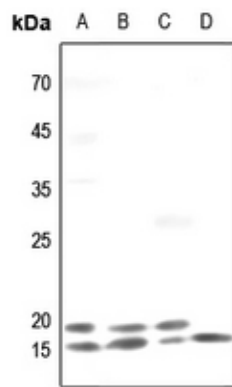
Protein Information

Name	TRAPPC3 {ECO:0000303 PubMed:19416478, ECO:0000312 HGNC:HGNC:19942}
Function	May play a role in vesicular transport from endoplasmic reticulum to Golgi.
Cellular Location	Golgi apparatus, cis-Golgi network. Endoplasmic reticulum

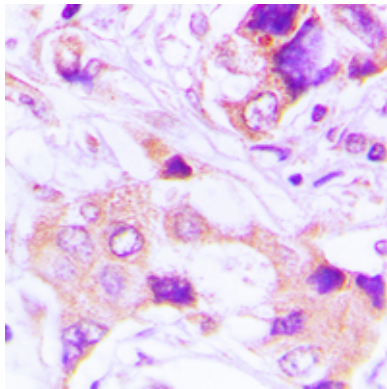
Background

KLH-conjugated synthetic peptide encompassing a sequence within the C-term region of human TRAPPC3. The exact sequence is proprietary.

Images



Western blot analysis of TRAPPC3 expression in HEK293T (A), mouse liver (B), rat lung (C), rat liver (D) whole cell lysates.



Immunohistochemical analysis of TRAPPC3 staining in human lung cancer formalin fixed paraffin embedded tissue section. The section was pre-treated using heat mediated antigen retrieval with sodium citrate buffer (pH 6.0). The section was then incubated with the antibody at room temperature and detected using an HRP conjugated compact polymer system. DAB was used as the chromogen. The section was then counterstained with haematoxylin and mounted with DPX.

Please note: All products are 'FOR RESEARCH USE ONLY. NOT FOR USE IN DIAGNOSTIC OR THERAPEUTIC PROCEDURES'.