

# Anti-VTI1B Antibody

Rabbit polyclonal antibody to VTI1B  
Catalog # AP60650

## Product Information

---

<b>Application</b>	WB
<b>Primary Accession</b>	<a href="#">Q9UEU0</a>
<b>Other Accession</b>	<a href="#">O88384</a>
<b>Reactivity</b>	Human, Mouse, Rat
<b>Host</b>	Rabbit
<b>Clonality</b>	Polyclonal
<b>Calculated MW</b>	26688

## Additional Information

---

<b>Gene ID</b>	10490
<b>Other Names</b>	VTI1; VTI1L; VTI1L1; VTI2; Vesicle transport through interaction with t-SNAREs homolog 1B; Vesicle transport v-SNARE protein Vti1-like 1; Vti1-rp1
<b>Target/Specificity</b>	KLH-conjugated synthetic peptide encompassing a sequence within the center region of human VTI1B. The exact sequence is proprietary.
<b>Dilution</b>	WB--WB (1/500 - 1/1000)
<b>Format</b>	Liquid in 0.42% Potassium phosphate, 0.87% Sodium chloride, pH 7.3, 30% glycerol, and 0.09% (W/V) sodium azide.
<b>Storage</b>	Store at -20 °C. Stable for 12 months from date of receipt

## Protein Information

---

<b>Name</b>	VTI1B
<b>Synonyms</b>	VTI1, VTI1L, VTI1L1, VTI2
<b>Function</b>	V-SNARE that mediates vesicle transport pathways through interactions with t-SNAREs on the target membrane. These interactions are proposed to mediate aspects of the specificity of vesicle trafficking and to promote fusion of the lipid bilayers. May be concerned with increased secretion of cytokines associated with cellular senescence.
<b>Cellular Location</b>	Early endosome membrane; Single-pass type IV membrane protein. Late endosome membrane; Single-pass type IV membrane protein. Lysosome membrane. Cytoplasmic granule. Recycling endosome membrane; Single-pass type IV membrane protein

**Tissue Location**

Expressed in all tissues examined.

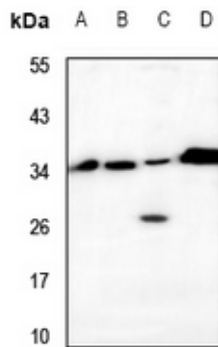
**Background**

---

KLH-conjugated synthetic peptide encompassing a sequence within the center region of human VTI1B. The exact sequence is proprietary.

**Images**

---



Western blot analysis of VTI1B expression in MCF7 (A), HepG2 (B), MEF (C), H9C2 (D) whole cell lysates.

Please note: All products are 'FOR RESEARCH USE ONLY. NOT FOR USE IN DIAGNOSTIC OR THERAPEUTIC PROCEDURES'.