

Anti-ZNF75D Antibody

Rabbit polyclonal antibody to ZNF75D

Catalog # AP60656

Product Information

Application	WB, IHC
Primary Accession	P51815
Reactivity	Human
Host	Rabbit
Clonality	Polyclonal
Calculated MW	59298

Additional Information

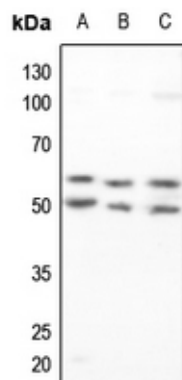
Gene ID	7626
Other Names	ZNF75; ZNF82; Zinc finger protein 75D; Zinc finger protein 75; Zinc finger protein 82
Target/Specificity	KLH-conjugated synthetic peptide encompassing a sequence within the C-term region of human ZNF75D. The exact sequence is proprietary.
Dilution	WB~~WB (1/500 - 1/1000), IHC (1/100 - 1/200) IHC~~WB (1/500 - 1/1000), IHC (1/100 - 1/200)
Format	Liquid in 0.42% Potassium phosphate, 0.87% Sodium chloride, pH 7.3, 30% glycerol, and 0.09% (W/V) sodium azide.
Storage	Store at -20 °C.Stable for 12 months from date of receipt

Protein Information

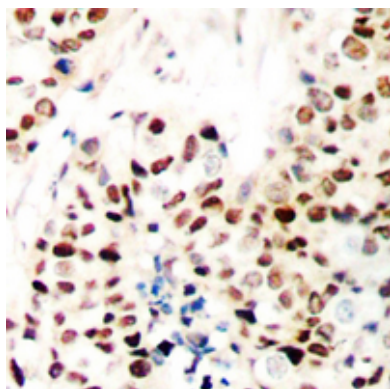
Name	ZNF75D
Synonyms	ZNF75, ZNF82
Function	May be involved in transcriptional regulation.
Cellular Location	Nucleus {ECO:0000255 PROSITE-ProRule:PRU00187}.

Background

KLH-conjugated synthetic peptide encompassing a sequence within the C-term region of human ZNF75D. The exact sequence is proprietary.



Western blot analysis of ZNF75D expression in HEK293T (A), Hela (B), H1688 (C) whole cell lysates.



Immunohistochemical analysis of ZNF75D staining in human breast cancer formalin fixed paraffin embedded tissue section. The section was pre-treated using heat mediated antigen retrieval with sodium citrate buffer (pH 6.0). The section was then incubated with the antibody at room temperature and detected using an HRP conjugated compact polymer system. DAB was used as the chromogen. The section was then counterstained with haematoxylin and mounted with DPX.

Please note: All products are 'FOR RESEARCH USE ONLY. NOT FOR USE IN DIAGNOSTIC OR THERAPEUTIC PROCEDURES'.