

Anti-CAGE1 Antibody

Rabbit polyclonal antibody to CAGE1

Catalog # AP60660

Product Information

Application	WB, IHC
Primary Accession	Q8TC20
Other Accession	Q5IR70
Reactivity	Human, Mouse, Monkey
Host	Rabbit
Clonality	Polyclonal
Calculated MW	90250

Additional Information

Gene ID	285782
Other Names	CTAG3; Cancer-associated gene 1 protein; CAGE-1; Cancer/testis antigen 3; CT3
Target/Specificity	KLH-conjugated synthetic peptide encompassing a sequence within the C-term region of human CAGE1. The exact sequence is proprietary.
Dilution	WB~~WB (1/500 - 1/1000), IHC (1/100 - 1/200) IHC~~WB (1/500 - 1/1000), IHC (1/100 - 1/200)
Format	Liquid in 0.42% Potassium phosphate, 0.87% Sodium chloride, pH 7.3, 30% glycerol, and 0.09% (W/V) sodium azide.
Storage	Store at -20 °C.Stable for 12 months from date of receipt

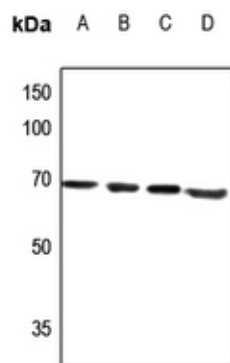
Protein Information

Name	CAGE1
Synonyms	CTAG3
Tissue Location	Testis-specific expression in normal tissues, but wide expression among cancer tissues and cell lines

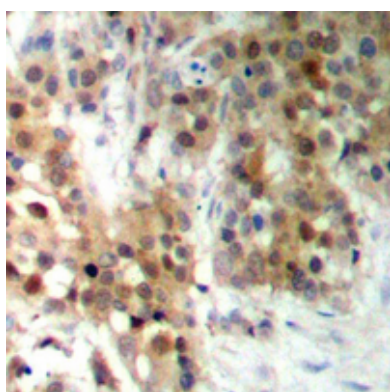
Background

KLH-conjugated synthetic peptide encompassing a sequence within the C-term region of human CAGE1. The exact sequence is proprietary.

Images



Western blot analysis of CAGE1 expression in HEK293T (A), HeLa (B), U2OS (C), mouse brain (D) whole cell lysates.



Immunohistochemical analysis of CAGE1 staining in human prostate cancer formalin fixed paraffin embedded tissue section. The section was pre-treated using heat mediated antigen retrieval with sodium citrate buffer (pH 6.0). The section was then incubated with the antibody at room temperature and detected using an HRP conjugated compact polymer system. DAB was used as the chromogen. The section was then counterstained with haematoxylin and mounted with DPX.

Please note: All products are 'FOR RESEARCH USE ONLY. NOT FOR USE IN DIAGNOSTIC OR THERAPEUTIC PROCEDURES'.