

Anti-CD1d Antibody

Rabbit polyclonal antibody to CD1d

Catalog # AP60662

Product Information

| | |
|-------------------|------------------------|
| Application | WB |
| Primary Accession | P15813 |
| Reactivity | Human |
| Host | Rabbit |
| Clonality | Polyclonal |
| Calculated MW | 37717 |

Additional Information

| | |
|--------------------|---|
| Gene ID | 912 |
| Other Names | Antigen-presenting glycoprotein CD1d; R3G1; CD1d |
| Target/Specificity | Recognizes endogenous levels of CD1d protein. |
| Dilution | WB~~WB (1/500 - 1/1000) |
| Format | Liquid in 0.42% Potassium phosphate, 0.87% Sodium chloride, pH 7.3, 30% glycerol, and 0.09% (W/V) sodium azide. |
| Storage | Store at -20 °C.Stable for 12 months from date of receipt |

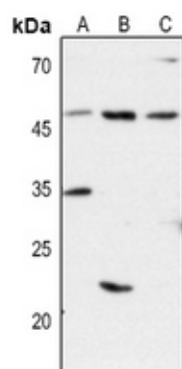
Protein Information

| | |
|-------------------|--|
| Name | CD1D |
| Function | Antigen-presenting protein that binds self and non-self glycolipids and presents them to T-cell receptors on natural killer T- cells. |
| Cellular Location | Cell membrane; Single-pass type I membrane protein. Basolateral cell membrane; Single-pass type I membrane protein. Endosome membrane; Single-pass type I membrane protein. Lysosome membrane; Single-pass type I membrane protein. Endoplasmic reticulum membrane; Single-pass type I membrane protein. Note=Subject to intracellular trafficking between the cell membrane, endosomes and lysosomes. |
| Tissue Location | Expressed on cortical thymocytes, on certain T-cell leukemias, and in various other tissues |

Background

KLH-conjugated synthetic peptide encompassing a sequence within the center region of human CD1d. The exact sequence is proprietary.

Images



Western blot analysis of CD1d expression in HEK293T (A), Hela (B), H446 (C) whole cell lysates.

Please note: All products are 'FOR RESEARCH USE ONLY. NOT FOR USE IN DIAGNOSTIC OR THERAPEUTIC PROCEDURES'.