

Anti-MLZE Antibody

Rabbit polyclonal antibody to MLZE

Catalog # AP60673

Product Information

Application	WB
Primary Accession	Q9BYG8
Other Accession	Q99NB5
Reactivity	Human, Mouse, Rat
Host	Rabbit
Clonality	Polyclonal
Calculated MW	57692

Additional Information

Gene ID	56169
Other Names	MLZE; Gasdermin-C; Melanoma-derived leucine zipper-containing extranuclear factor
Target/Specificity	Recognizes endogenous levels of MLZE protein.
Dilution	WB~~WB (1/500 - 1/1000)
Format	Liquid in 0.42% Potassium phosphate, 0.87% Sodium chloride, pH 7.3, 30% glycerol, and 0.09% (W/V) sodium azide.
Storage	Store at -20 °C.Stable for 12 months from date of receipt

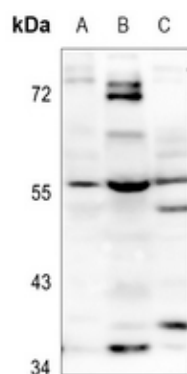
Protein Information

Name	GSDMC {ECO:0000303 PubMed:17350798, ECO:0000312 HGNC:HGNC:7151}
Function	[Gasdermin-C]: This form constitutes the precursor of the pore-forming protein: upon cleavage, the released N-terminal moiety (Gasdermin-C, N-terminal) binds to membranes and forms pores, triggering pyroptosis.
Cellular Location	[Gasdermin-C]: Cytoplasm, cytosol
Tissue Location	Expressed mainly in trachea and spleen (PubMed:11223543). In the esophagus, expressed in differentiating cells and probably in differentiated cells. Also detected in gastric epithelium (PubMed:19051310).

Background

KLH-conjugated synthetic peptide encompassing a sequence within the center region of human MLZE. The exact sequence is proprietary.

Images



Western blot analysis of MLZE expression in mouse spleen (A), rat kidney (B), rat spleen (C) whole cell lysates.

Please note: All products are 'FOR RESEARCH USE ONLY. NOT FOR USE IN DIAGNOSTIC OR THERAPEUTIC PROCEDURES'.