

Anti-LASP1 Antibody

Rabbit polyclonal antibody to LASP1

Catalog # AP60680

Product Information

Application	WB
Primary Accession	Q14847
Other Accession	Q61792
Reactivity	Human, Mouse, Rat, Pig, Bovine
Host	Rabbit
Clonality	Polyclonal
Calculated MW	29717

Additional Information

Gene ID	3927
Other Names	MLN50; LIM and SH3 domain protein 1; LASP-1; Metastatic lymph node gene 50 protein; MLN 50
Target/Specificity	KLH-conjugated synthetic peptide encompassing a sequence within the center region of human LASP1. The exact sequence is proprietary.
Dilution	WB~~WB (1/500 - 1/1000)
Format	Liquid in 0.42% Potassium phosphate, 0.87% Sodium chloride, pH 7.3, 30% glycerol, and 0.09% (W/V) sodium azide.
Storage	Store at -20 °C.Stable for 12 months from date of receipt

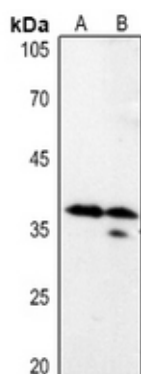
Protein Information

Name	LASP1
Synonyms	MLN50
Function	Plays an important role in the regulation of dynamic actin- based, cytoskeletal activities. Agonist-dependent changes in LASP1 phosphorylation may also serve to regulate actin-associated ion transport activities, not only in the parietal cell but also in certain other F-actin-rich secretory epithelial cell types (By similarity).
Cellular Location	Cytoplasm, cell cortex. Cytoplasm, cytoskeleton. Note=Associated with the F-actin rich cortical cytoskeleton.

Background

KLH-conjugated synthetic peptide encompassing a sequence within the center region of human LASP1. The exact sequence is proprietary.

Images



Western blot analysis of LASP1 expression in rat spleen (A), rat lung (B) whole cell lysates.

Please note: All products are 'FOR RESEARCH USE ONLY. NOT FOR USE IN DIAGNOSTIC OR THERAPEUTIC PROCEDURES'.