

Anti-POLR3H Antibody

Rabbit polyclonal antibody to POLR3H

Catalog # AP60685

Product Information

Application	WB, IHC
Primary Accession	Q9Y535
Other Accession	Q9D2C6
Reactivity	Human, Mouse, Rat, Monkey, Bovine
Host	Rabbit
Clonality	Polyclonal
Calculated MW	22918

Additional Information

Gene ID	171568
Other Names	KIAA1665; RPC8; DNA-directed RNA polymerase III subunit RPC8; RNA polymerase III subunit C8; DNA-directed RNA polymerase III subunit H; RNA polymerase III subunit 22.9 kDa subunit; RPC22.9
Target/Specificity	KLH-conjugated synthetic peptide encompassing a sequence within the C-term region of human POLR3H. The exact sequence is proprietary.
Dilution	WB~~WB (1/500 - 1/1000), IHC (1/100 - 1/200) IHC~~WB (1/500 - 1/1000), IHC (1/100 - 1/200)
Format	Liquid in 0.42% Potassium phosphate, 0.87% Sodium chloride, pH 7.3, 30% glycerol, and 0.09% (W/V) sodium azide.
Storage	Store at -20 °C.Stable for 12 months from date of receipt

Protein Information

Name	POLR3H (HGNC:30349)
Synonyms	KIAA1665, RPC8
Function	DNA-dependent RNA polymerase catalyzes the transcription of DNA into RNA using the four ribonucleoside triphosphates as substrates (PubMed: 20413673 , PubMed: 33558764 , PubMed: 34675218). Specific peripheric component of RNA polymerase III (Pol III) which synthesizes small non-coding RNAs including 5S rRNA, snRNAs, tRNAs and miRNAs from at least 500 distinct genomic loci. With CRCP/RPC9 forms a mobile stalk that protrudes from Pol III core and functions primarily in transcription initiation (By similarity) (PubMed: 33558764 , PubMed: 34675218). Pol III plays a key role in sensing and limiting infection by intracellular bacteria and DNA viruses.

Acts as nuclear and cytosolic DNA sensor involved in innate immune response. Can sense non-self dsDNA that serves as template for transcription into dsRNA. The non-self RNA polymerase III transcripts, such as Epstein-Barr virus-encoded RNAs (EBERs) induce type I interferon and NF-kappa-B through the RIG-I pathway (PubMed:[19609254](#), PubMed:[19631370](#)).

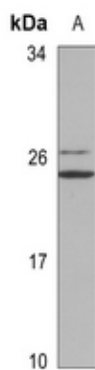
Cellular Location

Nucleus.

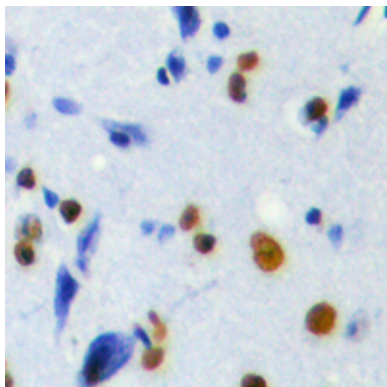
Background

KLH-conjugated synthetic peptide encompassing a sequence within the C-term region of human POLR3H. The exact sequence is proprietary.

Images



Western blot analysis of POLR3H expression in mouse liver (A) whole cell lysates.



Immunohistochemical analysis of POLR3H staining in human brain formalin fixed paraffin embedded tissue section. The section was pre-treated using heat mediated antigen retrieval with sodium citrate buffer (pH 6.0). The section was then incubated with the antibody at room temperature and detected using an HRP conjugated compact polymer system. DAB was used as the chromogen. The section was then counterstained with haematoxylin and mounted with DPX.

Please note: All products are 'FOR RESEARCH USE ONLY. NOT FOR USE IN DIAGNOSTIC OR THERAPEUTIC PROCEDURES'.