

Anti-EP2 Antibody

Rabbit polyclonal antibody to EP2

Catalog # AP60686

Product Information

Application	WB, IF/IC
Primary Accession	P43116
Other Accession	Q62053
Reactivity	Human, Mouse
Host	Rabbit
Clonality	Polyclonal
Calculated MW	39761

Additional Information

Gene ID	5732
Other Names	Prostaglandin E2 receptor EP2 subtype; PGE receptor EP2 subtype; PGE2 receptor EP2 subtype; Prostanoid EP2 receptor
Target/Specificity	Recognizes endogenous levels of EP2 protein.
Dilution	WB~~WB (1/500 - 1/1000), IF/IC (1/100 - 1/500) IF/IC~~N/A
Format	Liquid in 0.42% Potassium phosphate, 0.87% Sodium chloride, pH 7.3, 30% glycerol, and 0.09% (W/V) sodium azide.
Storage	Store at -20 °C.Stable for 12 months from date of receipt

Protein Information

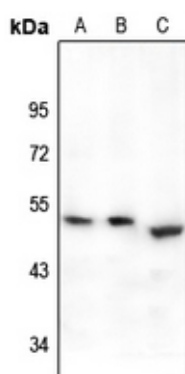
Name	PTGER2
Function	Receptor for prostaglandin E2 (PGE2). The activity of this receptor is mediated by G(s) proteins that stimulate adenylate cyclase. The subsequent raise in intracellular cAMP is responsible for the relaxing effect of this receptor on smooth muscle.
Cellular Location	Cell membrane; Multi-pass membrane protein.
Tissue Location	Placenta and lung.

Background

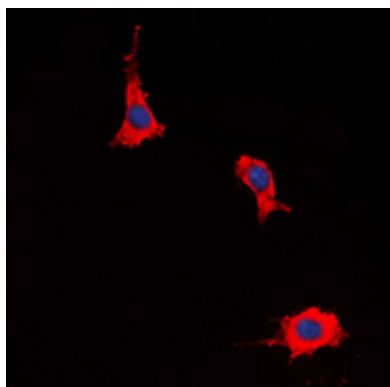
KLH-conjugated synthetic peptide encompassing a sequence within the C-term region of human EP2. The

exact sequence is proprietary.

Images



Western blot analysis of EP2 expression in A549 (A), HEK293T (B), mouse lung (C) whole cell lysates.



Immunofluorescent analysis of EP2 staining in HeLa cells. Formalin-fixed cells were permeabilized with 0.1% Triton X-100 in TBS for 5-10 minutes and blocked with 3% BSA-PBS for 30 minutes at room temperature. Cells were probed with the primary antibody in 3% BSA-PBS and incubated overnight at 4 °C in a humidified chamber. Cells were washed with PBST and incubated with a DyLight 594-conjugated secondary antibody (red) in PBS at room temperature in the dark. DAPI was used to stain the cell nuclei (blue).

Please note: All products are 'FOR RESEARCH USE ONLY. NOT FOR USE IN DIAGNOSTIC OR THERAPEUTIC PROCEDURES'.