

Anti-GCP6 Antibody

Rabbit polyclonal antibody to GCP6

Catalog # AP60691

Product Information

Application	WB, IHC
Primary Accession	Q96RT7
Reactivity	Human, Mouse, Rat
Host	Rabbit
Clonality	Polyclonal
Calculated MW	200498

Additional Information

Gene ID	85378
Other Names	GCP6; KIAA1669; Gamma-tubulin complex component 6; GCP-6
Target/Specificity	Recognizes endogenous levels of GCP6 protein.
Dilution	WB~~WB (1/500 - 1/1000), IHC (1/100 - 1/200) IHC~~WB (1/500 - 1/1000), IHC (1/100 - 1/200)
Format	Liquid in 0.42% Potassium phosphate, 0.87% Sodium chloride, pH 7.3, 30% glycerol, and 0.09% (W/V) sodium azide.
Storage	Store at -20 °C.Stable for 12 months from date of receipt

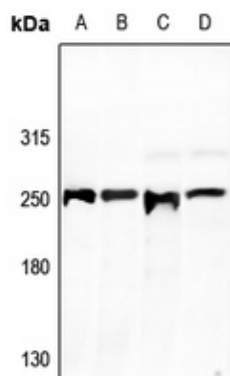
Protein Information

Name	TUBGCP6
Synonyms	GCP6, KIAA1669
Function	Component of the gamma-tubulin ring complex (gTuRC) which mediates microtubule nucleation (PubMed: 11694571 , PubMed: 38305685 , PubMed: 38609661 , PubMed: 39321809). The gTuRC regulates the minus-end nucleation of alpha-beta tubulin heterodimers that grow into microtubule protofilaments, a critical step in centrosome duplication and spindle formation (PubMed: 38305685 , PubMed: 38609661 , PubMed: 39321809).
Cellular Location	Cytoplasm, cytoskeleton, microtubule organizing center, centrosome

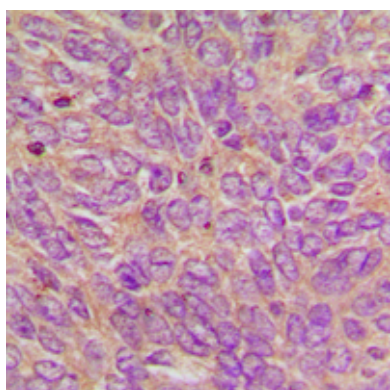
Background

KLH-conjugated synthetic peptide encompassing a sequence within the center region of human GCP6. The exact sequence is proprietary.

Images



Western blot analysis of GCP6 expression in PC12 (A), CT26 (B), HCT116 (C), A2780 (D) whole cell lysates.



Immunohistochemical analysis of GCP6 staining in human breast cancer formalin fixed paraffin embedded tissue section. The section was pre-treated using heat mediated antigen retrieval with sodium citrate buffer (pH 6.0). The section was then incubated with the antibody at room temperature and detected using an HRP conjugated compact polymer system. DAB was used as the chromogen. The section was then counterstained with haematoxylin and mounted with DPX.

Please note: All products are 'FOR RESEARCH USE ONLY. NOT FOR USE IN DIAGNOSTIC OR THERAPEUTIC PROCEDURES'.