

Anti-iNOS Antibody

Rabbit polyclonal antibody to iNOS

Catalog # AP60696

Product Information

Application	WB, IHC
Primary Accession	P35228
Other Accession	P29477
Reactivity	Human, Mouse, Rat, Bovine
Host	Rabbit
Clonality	Polyclonal
Calculated MW	131117

Additional Information

Gene ID	4843
Other Names	NOS2A; Nitric oxide synthase, inducible; Hepatocyte NOS; HEP-NOS; Inducible NO synthase; Inducible NOS; iNOS; NOS type II; Peptidyl-cysteine S-nitrosylase NOS2
Target/Specificity	Recognizes endogenous levels of iNOS protein.
Dilution	WB~~WB (1/500 - 1/1000), IHC (1/100 - 1/200) IHC~~WB (1/500 - 1/1000), IHC (1/100 - 1/200)
Format	Liquid in 0.42% Potassium phosphate, 0.87% Sodium chloride, pH 7.3, 30% glycerol, and 0.09% (W/V) sodium azide.
Storage	Store at -20 °C.Stable for 12 months from date of receipt

Protein Information

Name	NOS2 (HGNC:7873)
Synonyms	NOS2A
Function	Produces nitric oxide (NO) which is a messenger molecule with diverse functions throughout the body (PubMed: 7504305 , PubMed: 7531687 , PubMed: 7544004 , PubMed: 7682706). In macrophages, NO mediates tumoricidal and bactericidal actions. Also has nitrosylase activity and mediates cysteine S-nitrosylation of cytoplasmic target proteins such PTGS2/COX2 (By similarity). As component of the iNOS-S100A8/9 transnitrosylase complex involved in the selective inflammatory stimulus-dependent S-nitrosylation of GAPDH on 'Cys-247' implicated in regulation of the GAIT complex activity and probably multiple targets including ANXA5, EZR, MSN and VIM (PubMed: 25417112). Involved in

inflammation, enhances the synthesis of pro-inflammatory mediators such as IL6 and IL8 (PubMed:[19688109](#)).

Cellular Location

Cytoplasm, cytosol. Note=Localizes as discrete foci scattered throughout the cytosol and in the presence of SPSB1 and SPSB4, exhibits a more diffuse cytosolic localization.

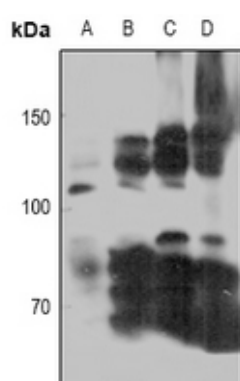
Tissue Location

Expressed in the liver, retina, bone cells and airway epithelial cells of the lung. Not expressed in the platelets Expressed in chondrocytes (PubMed:7504305)

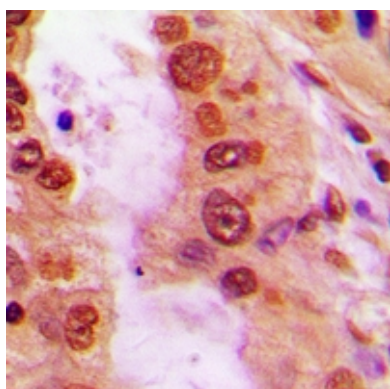
Background

KLH-conjugated synthetic peptide encompassing a sequence within the N-term region of human iNOS. The exact sequence is proprietary.

Images



Western blot analysis of iNOS expression in Hela (A), A549 (B), MCF7 (C), mouse brain (D) whole cell lysates.



Immunohistochemical analysis of iNOS staining in human lung cancer formalin fixed paraffin embedded tissue section. The section was pre-treated using heat mediated antigen retrieval with sodium citrate buffer (pH 6.0). The section was then incubated with the antibody at room temperature and detected using an HRP conjugated compact polymer system. DAB was used as the chromogen. The section was then counterstained with haematoxylin and mounted with DPX.

Please note: All products are 'FOR RESEARCH USE ONLY. NOT FOR USE IN DIAGNOSTIC OR THERAPEUTIC PROCEDURES'.