

# Anti-TCEAL1 Antibody

Rabbit polyclonal antibody to TCEAL1  
Catalog # AP60697

## Product Information

Application	WB, IF/IC, IHC
Primary Accession	<a href="#">Q15170</a>
Other Accession	<a href="#">Q921P9</a>
Reactivity	Human, Mouse, Rat, Bovine
Host	Rabbit
Clonality	Polyclonal
Calculated MW	18641

## Additional Information

Gene ID	9338
Other Names	SIIR; Transcription elongation factor A protein-like 1; TCEA-like protein 1; Nuclear phosphoprotein p21/SIIR; Transcription elongation factor S-II protein-like 1
Target/Specificity	Recognizes endogenous levels of TCEAL1 protein.
Dilution	WB~~WB (1/500 - 1/1000), IHC (1/100 - 1/200), IF/IC (1/100 - 1/500) IF/IC~~N/A IHC~~WB (1/500 - 1/1000), IHC (1/100 - 1/200), IF/IC (1/100 - 1/500)
Format	Liquid in 0.42% Potassium phosphate, 0.87% Sodium chloride, pH 7.3, 30% glycerol, and 0.09% (W/V) sodium azide.
Storage	Store at -20 °C.Stable for 12 months from date of receipt

## Protein Information

Name	TCEAL1 ( <a href="#">HGNC:11616</a> )
Synonyms	SIIR
Function	May be involved in transcriptional regulation. Modulates various viral and cellular promoters in a promoter context-dependent manner. For example, transcription from the FOS promoter is increased, while Rous sarcoma virus (RSV) long terminal repeat (LTR) promoter activity is repressed. Does not bind DNA directly.
Cellular Location	Nucleus.  Expressed in all tissues examined. Highly expressed in heart, ovary, prostate

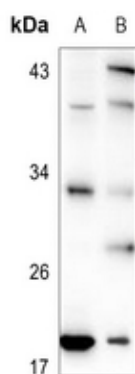
## Tissue Location

and skeletal muscle. Moderately expressed in brain, placenta, testis and small intestine. Weakly expressed in lung, liver and spleen. Expressed in several cancer cell lines

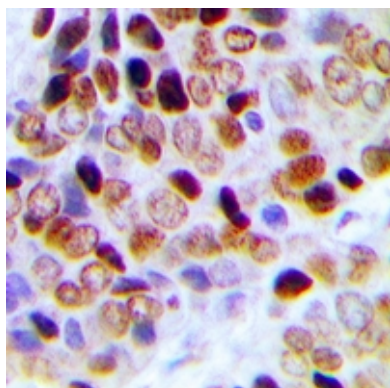
## Background

KLH-conjugated synthetic peptide encompassing a sequence within the center region of human TCEAL1. The exact sequence is proprietary.

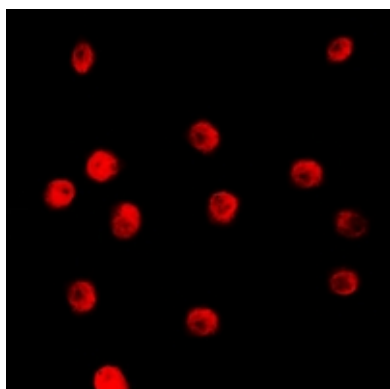
## Images



Western blot analysis of TCEAL1 expression in PC3 (A), A2780 (B) whole cell lysates.



Immunohistochemical analysis of TCEAL1 staining in human prostate cancer formalin fixed paraffin embedded tissue section. The section was pre-treated using heat mediated antigen retrieval with sodium citrate buffer (pH 6.0). The section was then incubated with the antibody at room temperature and detected using an HRP conjugated compact polymer system. DAB was used as the chromogen. The section was then counterstained with haematoxylin and mounted with DPX.



Immunofluorescent analysis of TCEAL1 staining in HepG2 cells. Formalin-fixed cells were permeabilized with 0.1% Triton X-100 in TBS for 5-10 minutes and blocked with 3% BSA-PBS for 30 minutes at room temperature. Cells were probed with the primary antibody in 3% BSA-PBS and incubated overnight at 4 °C in a humidified chamber. Cells were washed with PBST and incubated with a DyLight 594-conjugated secondary antibody (red) in PBS at room temperature in the dark.

Please note: All products are 'FOR RESEARCH USE ONLY. NOT FOR USE IN DIAGNOSTIC OR THERAPEUTIC PROCEDURES'.