

Anti-Apolipoprotein O-Like Antibody

Rabbit polyclonal antibody to Apolipoprotein O-Like

Catalog # AP60705

Product Information

Application	WB, IP
Primary Accession	Q6UXV4
Other Accession	Q78IK4
Reactivity	Human, Mouse, Rat, Bovine
Host	Rabbit
Clonality	Polyclonal
Calculated MW	29159

Additional Information

Gene ID	139322
Other Names	CXorf33; FAM121A; Apolipoprotein O-like; Protein FAM121A
Target/Specificity	KLH-conjugated synthetic peptide encompassing a sequence within the C-term region of human Apolipoprotein O-Like. The exact sequence is proprietary.
Dilution	WB~~WB (1/500 - 1/1000), IP (1/10 - 1/100) IP~~N/A
Format	Liquid in 0.42% Potassium phosphate, 0.87% Sodium chloride, pH 7.3, 30% glycerol, and 0.09% (W/V) sodium azide.
Storage	Store at -20 °C.Stable for 12 months from date of receipt

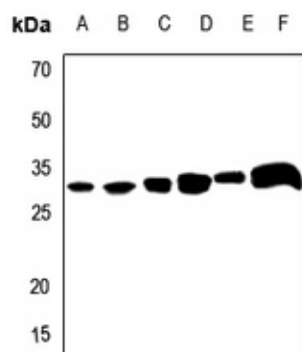
Protein Information

Name	APOOL
Synonyms	CXorf33, FAM121A, MIC27
Function	Component of the MICOS complex, a large protein complex of the mitochondrial inner membrane that plays crucial roles in the maintenance of crista junctions, inner membrane architecture, and formation of contact sites to the outer membrane. Specifically binds to cardiolipin (in vitro) but not to the precursor lipid phosphatidylglycerol. Plays a crucial role in crista junction formation and mitochondrial function (PubMed: 23704930), (PubMed: 25764979).
Cellular Location	Mitochondrion inner membrane; Multi-pass membrane protein. Mitochondrion

Background

KLH-conjugated synthetic peptide encompassing a sequence within the C-term region of human Apolipoprotein O-Like. The exact sequence is proprietary.

Images



Western blot analysis of Apolipoprotein O-Like expression in Hela (A), H446 (B), mouse kidney (C), mouse heart (D), rat kidney (E), rat heart (F) whole cell lysates.

Please note: All products are 'FOR RESEARCH USE ONLY. NOT FOR USE IN DIAGNOSTIC OR THERAPEUTIC PROCEDURES'.