

Anti-RIMS4 Antibody

Rabbit polyclonal antibody to RIMS4

Catalog # AP60709

Product Information

Application	WB, IHC
Primary Accession	Q9H426
Other Accession	P60191
Reactivity	Human, Mouse, Rat
Host	Rabbit
Clonality	Polyclonal
Calculated MW	29329

Additional Information

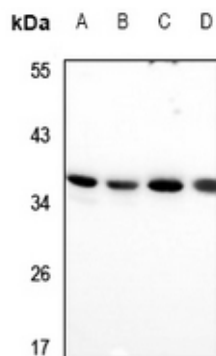
Gene ID	140730
Other Names	C20orf190; Regulating synaptic membrane exocytosis protein 4; RIM4 gamma; Rab3-interacting molecule 4; RIM 4
Target/Specificity	Recognizes endogenous levels of RIMS4 protein.
Dilution	WB~~WB (1/500 - 1/1000), IHC (1/100 - 1/200) IHC~~WB (1/500 - 1/1000), IHC (1/100 - 1/200)
Format	Liquid in 0.42% Potassium phosphate, 0.87% Sodium chloride, pH 7.3, 30% glycerol, and 0.09% (W/V) sodium azide.
Storage	Store at -20 °C.Stable for 12 months from date of receipt

Protein Information

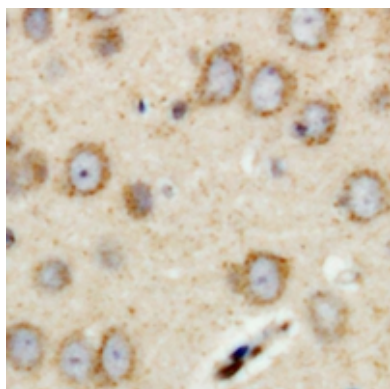
Name	RIMS4
Synonyms	C20orf190
Function	Regulates synaptic membrane exocytosis.
Cellular Location	Synapse.

Background

KLH-conjugated synthetic peptide encompassing a sequence within the center region of human RIMS4. The exact sequence is proprietary.



Western blot analysis of RIMS4 expression in BV2 (A), PMVEC (B), A549 (C), LOVO (D) whole cell lysates.



Immunohistochemical analysis of RIMS4 staining in human brain formalin fixed paraffin embedded tissue section. The section was pre-treated using heat mediated antigen retrieval with sodium citrate buffer (pH 6.0). The section was then incubated with the antibody at room temperature and detected using an HRP conjugated compact polymer system. DAB was used as the chromogen. The section was then counterstained with haematoxylin and mounted with DPX.

Please note: All products are 'FOR RESEARCH USE ONLY. NOT FOR USE IN DIAGNOSTIC OR THERAPEUTIC PROCEDURES'.