

Anti-Alpha Fodrin Antibody

Rabbit polyclonal antibody to Alpha Fodrin
Catalog # AP60711

Product Information

Application	WB, IP
Primary Accession	Q13813
Reactivity	Human
Host	Rabbit
Clonality	Polyclonal
Calculated MW	284539

Additional Information

Gene ID	6709
Other Names	NEAS; SPTA2; Spectrin alpha chain, non-erythrocytic 1; Alpha-II spectrin; Fodrin alpha chain; Spectrin, non-erythroid alpha subunit
Target/Specificity	Recognizes endogenous levels of Alpha Fodrin protein.
Dilution	WB~~WB (1/500 - 1/1000), IP (1/10 - 1/100) IP~~N/A
Format	Liquid in 0.42% Potassium phosphate, 0.87% Sodium chloride, pH 7.3, 30% glycerol, and 0.09% (W/V) sodium azide.
Storage	Store at -20 °C.Stable for 12 months from date of receipt

Protein Information

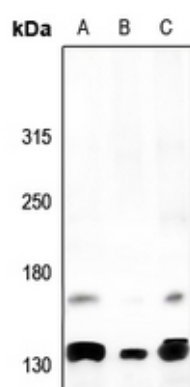
Name	SPTAN1
Synonyms	NEAS, SPTA2
Function	Fodrin, which seems to be involved in secretion, interacts with calmodulin in a calcium-dependent manner and is thus candidate for the calcium-dependent movement of the cytoskeleton at the membrane.
Cellular Location	Cytoplasm, cytoskeleton. Cytoplasm, cell cortex. Note=Expressed along the cell membrane in podocytes and presumptive tubule cells during glomerulogenesis and is expressed along lateral cell margins in tubule cells.

Background

KLH-conjugated synthetic peptide encompassing a sequence within the center region of human Alpha

Fodrin. The exact sequence is proprietary.

Images



Western blot analysis of Alpha Fodrin expression in LO2 (A), A2780 (B), HCT116 (C) whole cell lysates.

Please note: All products are 'FOR RESEARCH USE ONLY. NOT FOR USE IN DIAGNOSTIC OR THERAPEUTIC PROCEDURES'.