

Anti-B-RAF (pS446) Antibody

Rabbit polyclonal antibody to B-RAF (pS446)

Catalog # AP60713

Product Information

Application	WB, IP, IHC
Primary Accession	P15056
Other Accession	P28028
Reactivity	Human, Mouse, Rat, Chicken
Host	Rabbit
Clonality	Polyclonal
Calculated MW	84437

Additional Information

Gene ID	673
Other Names	BRAF1; RAFB1; Serine/threonine-protein kinase B-raf; Proto-oncogene B-Raf; p94; v-Raf murine sarcoma viral oncogene homolog B1
Target/Specificity	KLH-conjugated synthetic peptide encompassing a sequence within the center region of human B-RAF. The exact sequence is proprietary.
Dilution	WB~~WB (1/500 - 1/1000), IHC (1/100 - 1/200), IP (1/10 - 1/100) IP~~N/A IHC~~WB (1/500 - 1/1000), IHC (1/100 - 1/200), IP (1/10 - 1/100)
Format	Liquid in 0.42% Potassium phosphate, 0.87% Sodium chloride, pH 7.3, 30% glycerol, and 0.09% (W/V) sodium azide.
Storage	Store at -20 °C.Stable for 12 months from date of receipt

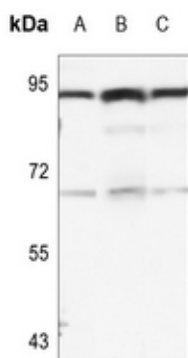
Protein Information

Name	BRAF (HGNC:1097)
Synonyms	BRAF1, RAFB1
Function	Protein kinase involved in the transduction of mitogenic signals from the cell membrane to the nucleus (Probable). Phosphorylates MAP2K1, and thereby activates the MAP kinase signal transduction pathway (PubMed: 21441910 , PubMed: 29433126). Phosphorylates PFKFB2 (PubMed: 36402789). May play a role in the postsynaptic responses of hippocampal neurons (PubMed: 1508179).
Cellular Location	Nucleus. Cytoplasm. Cell membrane. Note=Colocalizes with RGS14 and RAF1 in both the cytoplasm and membranes.

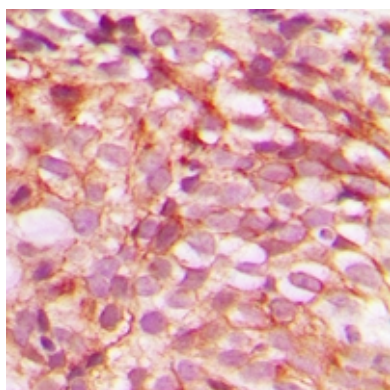
Background

KLH-conjugated synthetic peptide encompassing a sequence within the center region of human B-RAF. The exact sequence is proprietary.

Images



Western blot analysis of B-RAF (pS446) expression in HEK293T (A), mouse brain (B), rat brain (C) whole cell lysates.



Immunohistochemical analysis of B-RAF (pS446) staining in human breast cancer formalin fixed paraffin embedded tissue section. The section was pre-treated using heat mediated antigen retrieval with sodium citrate buffer (pH 6.0). The section was then incubated with the antibody at room temperature and detected using an HRP conjugated compact polymer system. DAB was used as the chromogen. The section was then counterstained with haematoxylin and mounted with DPX.

Please note: All products are 'FOR RESEARCH USE ONLY. NOT FOR USE IN DIAGNOSTIC OR THERAPEUTIC PROCEDURES'.