

# Anti-14-3-3 zeta (pT232) Antibody

Rabbit polyclonal antibody to 14-3-3 zeta (pT232)

Catalog # AP60715

## Product Information

Application	WB, IHC
Primary Accession	<a href="#">P63104</a>
Other Accession	<a href="#">P63101</a>
Reactivity	Human, Mouse, Rat, Pig, Chicken, Bovine, SARS
Host	Rabbit
Clonality	Polyclonal
Calculated MW	27745

## Additional Information

Gene ID	7534
Other Names	14-3-3 protein zeta/delta; Protein kinase C inhibitor protein 1; KCIP-1
Target/Specificity	Recognizes endogenous levels of 14-3-3 zeta (pT232) protein.
Dilution	WB~~WB (1/500 - 1/1000), IHC (1/100 - 1/200) IHC~~WB (1/500 - 1/1000), IHC (1/100 - 1/200)
Format	Liquid in 0.42% Potassium phosphate, 0.87% Sodium chloride, pH 7.3, 30% glycerol, and 0.09% (W/V) sodium azide.
Storage	Store at -20 °C.Stable for 12 months from date of receipt

## Protein Information

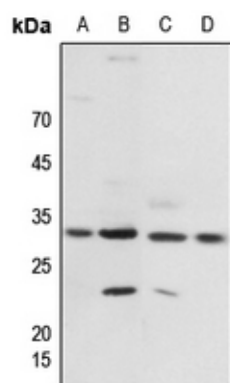
Name	YWHAZ
Function	<p>Adapter protein implicated in the regulation of a large spectrum of both general and specialized signaling pathways (PubMed:<a href="#">14578935</a>, PubMed:<a href="#">15071501</a>, PubMed:<a href="#">15644438</a>, PubMed:<a href="#">16376338</a>, PubMed:<a href="#">16959763</a>, PubMed:<a href="#">31024343</a>, PubMed:<a href="#">9360956</a>). Binds to a large number of partners, usually by recognition of a phosphoserine or phosphothreonine motif (PubMed:<a href="#">35662396</a>). Binding generally results in the modulation of the activity of the binding partner (PubMed:<a href="#">35662396</a>). Promotes cytosolic retention and inactivation of TFEB transcription factor by binding to phosphorylated TFEB (PubMed:<a href="#">35662396</a>). Induces ARHGEF7 activity on RAC1 as well as lamellipodia and membrane ruffle formation (PubMed:<a href="#">16959763</a>). In neurons, regulates spine maturation through the modulation of ARHGEF7 activity (By similarity).</p> <p>Cytoplasm. Melanosome. Note=Located to stage I to stage IV melanosomes.</p>

## Cellular Location

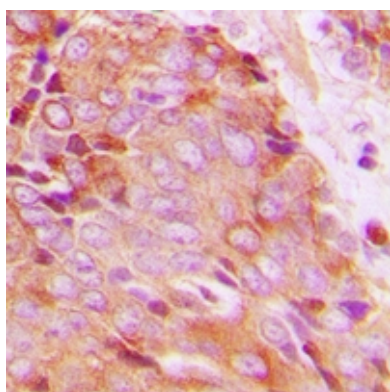
## Background

KLH-conjugated synthetic peptide encompassing a sequence within the C-term region of human 14-3-3 zeta. The exact sequence is proprietary.

## Images



Western blot analysis of 14-3-3 zeta (pT232) expression in Hela (A), AGS (B), rat brain (C), rat spleen (D) whole cell lysates.



Immunohistochemical analysis of 14-3-3 zeta (pT232) staining in human breast cancer formalin fixed paraffin embedded tissue section. The section was pre-treated using heat mediated antigen retrieval with sodium citrate buffer (pH 6.0). The section was then incubated with the antibody at room temperature and detected using an HRP conjugated compact polymer system. DAB was used as the chromogen. The section was then counterstained with haematoxylin and mounted with DPX.

Please note: All products are 'FOR RESEARCH USE ONLY. NOT FOR USE IN DIAGNOSTIC OR THERAPEUTIC PROCEDURES'.