

# Anti-ID4 Antibody

Rabbit polyclonal antibody to ID4

Catalog # AP60722

## Product Information

---

<b>Application</b>	WB, IHC
<b>Primary Accession</b>	<a href="#">P47928</a>
<b>Other Accession</b>	<a href="#">P41139</a>
<b>Reactivity</b>	Human, Mouse, Rat, Pig
<b>Host</b>	Rabbit
<b>Clonality</b>	Polyclonal
<b>Calculated MW</b>	16622

## Additional Information

---

<b>Gene ID</b>	3400
<b>Other Names</b>	BHLHB27; DNA-binding protein inhibitor ID-4; Class B basic helix-loop-helix protein 27; bHLHb27; Inhibitor of DNA binding 4
<b>Target/Specificity</b>	KLH-conjugated synthetic peptide encompassing a sequence within the N-term region of human ID4. The exact sequence is proprietary.
<b>Dilution</b>	WB~~WB (1/500 - 1/1000), IHC (1/100 - 1/200) IHC~~WB (1/500 - 1/1000), IHC (1/100 - 1/200)
<b>Format</b>	Liquid in 0.42% Potassium phosphate, 0.87% Sodium chloride, pH 7.3, 30% glycerol, and 0.09% (W/V) sodium azide.
<b>Storage</b>	Store at -20 °C.Stable for 12 months from date of receipt

## Protein Information

---

<b>Name</b>	ID4
<b>Synonyms</b>	BHLHB27
<b>Function</b>	Transcriptional regulator (lacking a basic DNA binding domain) which negatively regulates the basic helix-loop-helix (bHLH) transcription factors by forming heterodimers and inhibiting their DNA binding and transcriptional activity. Implicated in regulating a variety of cellular processes, including cellular growth, senescence, differentiation, apoptosis, angiogenesis, and neoplastic transformation (By similarity).
<b>Cellular Location</b>	Nucleus.

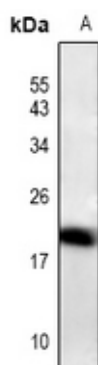
## Background

---

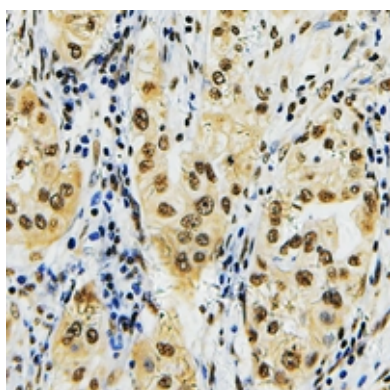
KLH-conjugated synthetic peptide encompassing a sequence within the N-term region of human ID4. The exact sequence is proprietary.

## Images

---



Western blot analysis of ID4 expression in C6 (A) whole cell lysates.



Immunohistochemical analysis of ID4 staining in human lung cancer formalin fixed paraffin embedded tissue section. The section was pre-treated using heat mediated antigen retrieval with sodium citrate buffer (pH 6.0). The section was then incubated with the antibody at room temperature and detected using an HRP conjugated compact polymer system. DAB was used as the chromogen. The section was then counterstained with haematoxylin and mounted with DPX.

Please note: All products are 'FOR RESEARCH USE ONLY. NOT FOR USE IN DIAGNOSTIC OR THERAPEUTIC PROCEDURES'.