

Anti-SERINC1 Antibody

Rabbit polyclonal antibody to SERINC1

Catalog # AP60730

Product Information

Application	WB
Primary Accession	Q9NRX5
Other Accession	Q9QZI8
Reactivity	Human, Mouse, Rat, Bovine
Host	Rabbit
Clonality	Polyclonal
Calculated MW	50495

Additional Information

Gene ID	57515
Other Names	KIAA1253; TDE1L; TDE2; Serine incorporator 1; Tumor differentially expressed protein 1-like; Tumor differentially expressed protein 2
Target/Specificity	KLH-conjugated synthetic peptide encompassing a sequence within the C-term region of human SERINC1. The exact sequence is proprietary.
Dilution	WB~~WB (1/500 - 1/1000)
Format	Liquid in 0.42% Potassium phosphate, 0.87% Sodium chloride, pH 7.3, 30% glycerol, and 0.09% (W/V) sodium azide.
Storage	Store at -20 °C.Stable for 12 months from date of receipt

Protein Information

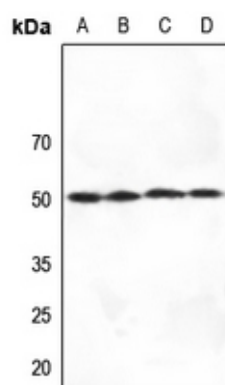
Name	SERINC1
Synonyms	KIAA1253, TDE1L, TDE2
Function	Enhances the incorporation of serine into phosphatidylserine and sphingolipids.
Cellular Location	Endoplasmic reticulum membrane {ECO:0000250 UniProtKB:Q7TNK0}; Multi-pass membrane protein {ECO:0000250 UniProtKB:Q7TNK0}

Background

KLH-conjugated synthetic peptide encompassing a sequence within the C-term region of human SERINC1.

The exact sequence is proprietary.

Images



Western blot analysis of SERINC1 expression in A549 (A), MCF7 (B), mouse brain (C), rat brain (D) whole cell lysates.

Please note: All products are 'FOR RESEARCH USE ONLY. NOT FOR USE IN DIAGNOSTIC OR THERAPEUTIC PROCEDURES'.