

# Anti-CADM3 Antibody

Rabbit polyclonal antibody to CADM3

Catalog # AP60742

## Product Information

---

Application	WB
Primary Accession	<a href="#">Q8N126</a>
Other Accession	<a href="#">Q99N28</a>
Reactivity	Human, Mouse, Bovine
Host	Rabbit
Clonality	Polyclonal
Calculated MW	43300

## Additional Information

---

Gene ID	57863
Other Names	IGSF4B; NECL1; SYNCAM3; TSLL1; Cell adhesion molecule 3; Brain immunoglobulin receptor; Immunoglobulin superfamily member 4B; IgSF4B; Nectin-like protein 1; NECL-1; Synaptic cell adhesion molecule 3; SynCAM3; TSLC1-like protein 1; TSLL1
Target/Specificity	KLH-conjugated synthetic peptide encompassing a sequence within the center region of human CADM3. The exact sequence is proprietary.
Dilution	WB~~WB (1/500 - 1/1000)
Format	Liquid in 0.42% Potassium phosphate, 0.87% Sodium chloride, pH 7.3, 30% glycerol, and 0.09% (W/V) sodium azide.
Storage	Store at -20 °C.Stable for 12 months from date of receipt

## Protein Information

---

Name	CADM3
Synonyms	IGSF4B, NECL1, SYNCAM3, TSLL1
Function	Involved in cell-cell adhesion. Has both calcium-independent homophilic cell-cell adhesion activity and calcium-independent heterophilic cell-cell adhesion activity with IGSF4, NECTIN1 and NECTIN3. Interaction with EPB41L1 may regulate structure or function of cell-cell junctions (By similarity).
Cellular Location	Cell membrane; Single-pass type I membrane protein. Cell junction  Isoform 1 is expressed mainly in adult and fetal brain. Isoform 2 is highly

**Tissue Location**

expressed in adult brain and weakly expressed in placenta. In brain, Isoform 2 is highly expressed in cerebellum.

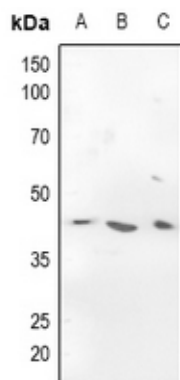
**Background**

---

KLH-conjugated synthetic peptide encompassing a sequence within the center region of human CADM3. The exact sequence is proprietary.

**Images**

---



Western blot analysis of CADM3 expression in HEK293T (A), Hela (B), mouse brain (C) whole cell lysates.

Please note: All products are 'FOR RESEARCH USE ONLY. NOT FOR USE IN DIAGNOSTIC OR THERAPEUTIC PROCEDURES'.