

Anti-Laminin beta 2 Antibody

Rabbit polyclonal antibody to Laminin beta 2

Catalog # AP60747

Product Information

Application	WB
Primary Accession	P55268
Other Accession	Q61292
Reactivity	Human, Mouse, Rat
Host	Rabbit
Clonality	Polyclonal
Calculated MW	195981

Additional Information

Gene ID	3913
Other Names	LAMS; Laminin subunit beta-2; Laminin B1s chain; Laminin-11 subunit beta; Laminin-14 subunit beta; Laminin-15 subunit beta; Laminin-3 subunit beta; Laminin-4 subunit beta; Laminin-7 subunit beta; Laminin-9 subunit beta; S-laminin subunit beta; S-LAM beta
Target/Specificity	Recognizes endogenous levels of Laminin beta 2 protein.
Dilution	WB~~WB (1/500 - 1/1000)
Format	Liquid in 0.42% Potassium phosphate, 0.87% Sodium chloride, pH 7.3, 30% glycerol, and 0.09% (W/V) sodium azide.
Storage	Store at -20 °C.Stable for 12 months from date of receipt

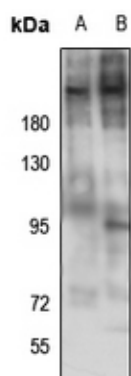
Protein Information

Name	LAMB2
Synonyms	LAMS
Function	Binding to cells via a high affinity receptor, laminin is thought to mediate the attachment, migration and organization of cells into tissues during embryonic development by interacting with other extracellular matrix components.
Cellular Location	Secreted, extracellular space, extracellular matrix, basement membrane. Note=S-laminin is concentrated in the synaptic cleft of the neuromuscular junction

Background

KLH-conjugated synthetic peptide encompassing a sequence within the N-term region of human Laminin beta 2. The exact sequence is proprietary.

Images



Western blot analysis of Laminin beta 2 expression in mouse lung (A), mouse testis (B) whole cell lysates.

Please note: All products are 'FOR RESEARCH USE ONLY. NOT FOR USE IN DIAGNOSTIC OR THERAPEUTIC PROCEDURES'.