

Anti-ACBD6 Antibody

Rabbit polyclonal antibody to ACBD6

Catalog # AP60748

Product Information

Application	WB, IHC
Primary Accession	Q9BR61
Other Accession	Q9D061
Reactivity	Human, Mouse, Rat
Host	Rabbit
Clonality	Polyclonal
Calculated MW	31151

Additional Information

Gene ID	84320
Other Names	Acyl-CoA-binding domain-containing protein 6
Target/Specificity	KLH-conjugated synthetic peptide encompassing a sequence within the center region of human ACBD6. The exact sequence is proprietary.
Dilution	WB~~WB (1/500 - 1/1000), IHC (1/100 - 1/200) IHC~~WB (1/500 - 1/1000), IHC (1/100 - 1/200)
Format	Liquid in 0.42% Potassium phosphate, 0.87% Sodium chloride, pH 7.3, 30% glycerol, and 0.09% (W/V) sodium azide.
Storage	Store at -20 °C.Stable for 12 months from date of receipt

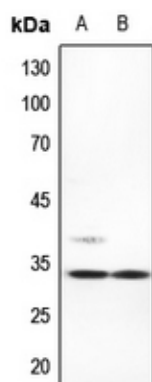
Protein Information

Name	ACBD6
Function	Binds long-chain acyl-coenzyme A molecules with a strong preference for unsaturated C18:1-CoA, lower affinity for unsaturated C20:4-CoA, and very weak affinity for saturated C16:0-CoA. Does not bind fatty acids. Plays a role in protein N-myristoylation (PubMed: 37951597).
Cellular Location	Cytoplasm. Nucleus
Tissue Location	Detected in placenta and spleen (at protein level). Detected in placenta, umbilical cord blood, CD34-positive hematopoietic progenitor cells and bone marrow.

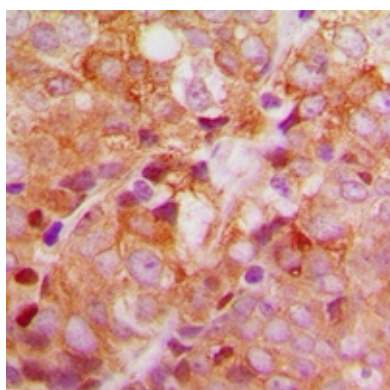
Background

KLH-conjugated synthetic peptide encompassing a sequence within the center region of human ACBD6. The exact sequence is proprietary.

Images



Western blot analysis of ACBD6 expression in mouse lung (A), mouse liver (B) whole cell lysates.



Immunohistochemical analysis of ACBD6 staining in human breast cancer formalin fixed paraffin embedded tissue section. The section was pre-treated using heat mediated antigen retrieval with sodium citrate buffer (pH 6.0). The section was then incubated with the antibody at room temperature and detected using an HRP conjugated compact polymer system. DAB was used as the chromogen. The section was then counterstained with haematoxylin and mounted with DPX.

Please note: All products are 'FOR RESEARCH USE ONLY. NOT FOR USE IN DIAGNOSTIC OR THERAPEUTIC PROCEDURES'.