

Anti-B4GALT1 Antibody

Rabbit polyclonal antibody to B4GALT1

Catalog # AP60753

Product Information

Application	WB, IHC
Primary Accession	P15291
Other Accession	P15535
Reactivity	Human, Mouse, Rat, Monkey, Bovine
Host	Rabbit
Clonality	Polyclonal
Calculated MW	43920

Additional Information

Gene ID	2683
Other Names	GGTB2; Beta-1, 4-galactosyltransferase 1; Beta-1, 4-GalTase 1; Beta4Gal-T1; b4Gal-T1; UDP-Gal:beta-GlcNAc beta-1, 4-galactosyltransferase 1; UDP-galactose:beta-N-acetylglucosamine beta-1, 4-galactosyltransferase 1
Target/Specificity	Recognizes endogenous levels of B4GALT1 protein.
Dilution	WB~~WB (1/500 - 1/1000), IHC (1/100 - 1/200) IHC~~WB (1/500 - 1/1000), IHC (1/100 - 1/200)
Format	Liquid in 0.42% Potassium phosphate, 0.87% Sodium chloride, pH 7.3, 30% glycerol, and 0.09% (W/V) sodium azide.
Storage	Store at -20 °C.Stable for 12 months from date of receipt

Protein Information

Name	B4GALT1 (HGNC:924)
Synonyms	GGTB2
Function	[Beta-1,4-galactosyltransferase 1]: The Golgi complex form catalyzes the production of lactose in the lactating mammary gland and could also be responsible for the synthesis of complex-type N-linked oligosaccharides in many glycoproteins as well as the carbohydrate moieties of glycolipids.
Cellular Location	[Isoform Long]: Golgi apparatus, Golgi stack membrane; Single-pass type II membrane protein. Cell membrane; Single-pass type II membrane protein Cell surface. Cell projection, filopodium {ECO:0000250 UniProtKB:P15535}. Note=Found in trans cisternae of Golgi but is mainly localized at the plasma membrane (PubMed:1714903) B4GALT1 cell surface expression is regulated

by UBE2Q1 (By similarity) {ECO:0000250|UniProtKB:P15535, ECO:0000269|PubMed:1714903} [Processed beta-1,4-galactosyltransferase 1]: Secreted. Note=Soluble form found in body fluids.

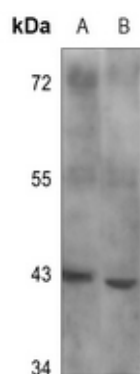
Tissue Location

Ubiquitously expressed, but at very low levels in fetal and adult brain

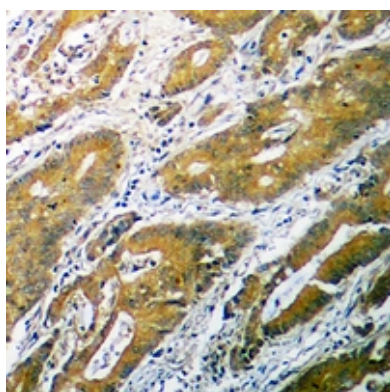
Background

KLH-conjugated synthetic peptide encompassing a sequence within the C-term region of human B4GALT1. The exact sequence is proprietary.

Images



Western blot analysis of B4GALT1 expression in mouse liver (A), rat liver (B) whole cell lysates.



Immunohistochemical analysis of B4GALT1 staining in human colon cancer formalin fixed paraffin embedded tissue section. The section was pre-treated using heat mediated antigen retrieval with sodium citrate buffer (pH 6.0). The section was then incubated with the antibody at room temperature and detected using an HRP conjugated compact polymer system. DAB was used as the chromogen. The section was then counterstained with haematoxylin and mounted with DPX.

Please note: All products are 'FOR RESEARCH USE ONLY. NOT FOR USE IN DIAGNOSTIC OR THERAPEUTIC PROCEDURES'.