

# Anti-CEP76 Antibody

Rabbit polyclonal antibody to CEP76

Catalog # AP60755

## Product Information

---

<b>Application</b>	WB, IHC
<b>Primary Accession</b>	<a href="#">Q8TAP6</a>
<b>Other Accession</b>	<a href="#">Q0VEJ0</a>
<b>Reactivity</b>	Human, Mouse, Rat, Zebrafish, Monkey
<b>Host</b>	Rabbit
<b>Clonality</b>	Polyclonal
<b>Calculated MW</b>	74413

## Additional Information

---

<b>Gene ID</b>	79959
<b>Other Names</b>	C18orf9; Centrosomal protein of 76 kDa; Cep76
<b>Target/Specificity</b>	Recognizes endogenous levels of CEP76 protein.
<b>Dilution</b>	WB~~WB (1/500 - 1/1000), IHC (1/100 - 1/200) IHC~~WB (1/500 - 1/1000), IHC (1/100 - 1/200)
<b>Format</b>	Liquid in 0.42% Potassium phosphate, 0.87% Sodium chloride, pH 7.3, 30% glycerol, and 0.09% (W/V) sodium azide.
<b>Storage</b>	Store at -20 °C.Stable for 12 months from date of receipt

## Protein Information

---

<b>Name</b>	CEP76
<b>Synonyms</b>	C18orf9
<b>Function</b>	Centrosomal protein involved in regulation of centriole duplication. Required to limit centriole duplication to once per cell cycle by preventing centriole reduplication.
<b>Cellular Location</b>	Cytoplasm, cytoskeleton, microtubule organizing center, centrosome. Cytoplasm, cytoskeleton, microtubule organizing center, centrosome, centriole Note=Does not localize along the ciliary axoneme

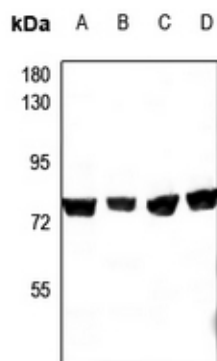
## Background

---

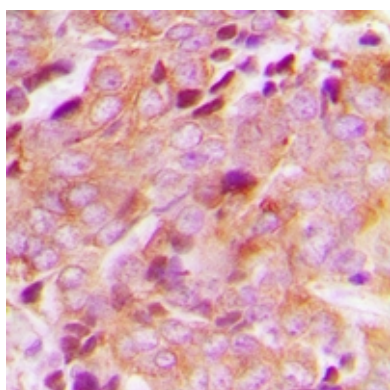
KLH-conjugated synthetic peptide encompassing a sequence within the center region of human CEP76. The exact sequence is proprietary.

## Images

---



Western blot analysis of CEP76 expression in COS7 (A), PC3 (B), CT26 (C), PC12 (D) whole cell lysates.



Immunohistochemical analysis of CEP76 staining in human breast cancer formalin fixed paraffin embedded tissue section. The section was pre-treated using heat mediated antigen retrieval with sodium citrate buffer (pH 6.0). The section was then incubated with the antibody at room temperature and detected using an HRP conjugated compact polymer system. DAB was used as the chromogen. The section was then counterstained with haematoxylin and mounted with DPX.

Please note: All products are 'FOR RESEARCH USE ONLY. NOT FOR USE IN DIAGNOSTIC OR THERAPEUTIC PROCEDURES'.