

Anti-RRP8 Antibody

Rabbit polyclonal antibody to RRP8

Catalog # AP60756

Product Information

Application	WB, IHC
Primary Accession	O43159
Reactivity	Human, Mouse, Rat
Host	Rabbit
Clonality	Polyclonal
Calculated MW	50715

Additional Information

Gene ID	23378
Other Names	KIAA0409; NML; Ribosomal RNA-processing protein 8; Cerebral protein 1; Nucleomethylin
Target/Specificity	KLH-conjugated synthetic peptide encompassing a sequence within the center region of human RRP8. The exact sequence is proprietary.
Dilution	WB~~WB (1/500 - 1/1000), IHC (1/100 - 1/200) IHC~~WB (1/500 - 1/1000), IHC (1/100 - 1/200)
Format	Liquid in 0.42% Potassium phosphate, 0.87% Sodium chloride, pH 7.3, 30% glycerol, and 0.09% (W/V) sodium azide.
Storage	Store at -20 °C.Stable for 12 months from date of receipt

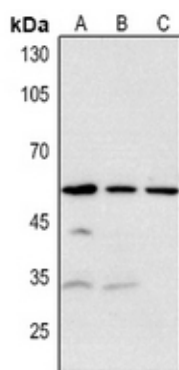
Protein Information

Name	RRP8
Synonyms	KIAA0409, NML
Function	Essential component of the eNoSC (energy-dependent nucleolar silencing) complex, a complex that mediates silencing of rDNA in response to intracellular energy status and acts by recruiting histone- modifying enzymes. The eNoSC complex is able to sense the energy status of cell: upon glucose starvation, elevation of NAD(+)/NADP(+) ratio activates SIRT1, leading to histone H3 deacetylation followed by dimethylation of H3 at 'Lys-9' (H3K9me2) by SUV39H1 and the formation of silent chromatin in the rDNA locus. In the complex, RRP8 binds to H3K9me2 and probably acts as a methyltransferase. Its substrates are however unknown.
Cellular Location	Nucleus, nucleolus Note=Localizes at rDNA locus

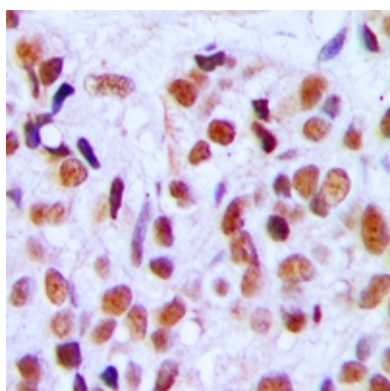
Background

KLH-conjugated synthetic peptide encompassing a sequence within the center region of human RRP8. The exact sequence is proprietary.

Images



Western blot analysis of RRP8 expression in HEK293T (A), mouse brain (B), rat brain (C) whole cell lysates.



Immunohistochemical analysis of RRP8 staining in human breast cancer formalin fixed paraffin embedded tissue section. The section was pre-treated using heat mediated antigen retrieval with sodium citrate buffer (pH 6.0). The section was then incubated with the antibody at room temperature and detected using an HRP conjugated compact polymer system. DAB was used as the chromogen. The section was then counterstained with haematoxylin and mounted with DPX.

Please note: All products are 'FOR RESEARCH USE ONLY. NOT FOR USE IN DIAGNOSTIC OR THERAPEUTIC PROCEDURES'.