

Anti-GGH Antibody

Rabbit polyclonal antibody to GGH
Catalog # AP60765

Product Information

Application	WB
Primary Accession	Q92820
Other Accession	Q9Z0L8
Reactivity	Human, Mouse, Rat
Host	Rabbit
Clonality	Polyclonal
Calculated MW	35964

Additional Information

Gene ID	8836
Other Names	Gamma-glutamyl hydrolase; Conjugase; GH; Gamma-Glu-X carboxypeptidase
Target/Specificity	KLH-conjugated synthetic peptide encompassing a sequence within the C-term region of human GGH. The exact sequence is proprietary.
Dilution	WB~~WB (1/500 - 1/1000)
Format	Liquid in 0.42% Potassium phosphate, 0.87% Sodium chloride, pH 7.3, 30% glycerol, and 0.09% (W/V) sodium azide.
Storage	Store at -20 °C.Stable for 12 months from date of receipt

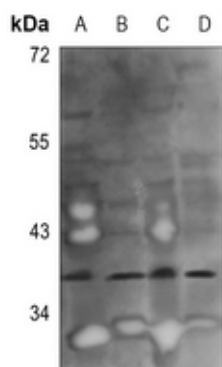
Protein Information

Name	GGH (HGNC:4248)
Function	Hydrolyzes the polyglutamate sidechains of pteroylpolyglutamates. Progressively removes gamma-glutamyl residues from pteroylpoly-gamma-glutamate to yield pteroyl-alpha-glutamate (folic acid) and free glutamate (PubMed: 11005824 , PubMed: 8816764). May play an important role in the bioavailability of dietary pteroylpolyglutamates and in the metabolism of pteroylpolyglutamates and antifolates.
Cellular Location	Secreted, extracellular space. Lysosome. Melanosome. Note=While its intracellular location is primarily the lysosome, most of the enzyme activity is secreted Identified by mass spectrometry in melanosome fractions from stage I to stage IV.

Background

KLH-conjugated synthetic peptide encompassing a sequence within the C-term region of human GGH. The exact sequence is proprietary.

Images



Western blot analysis of GGH expression in mouse liver (A), mouse lung (B), rat liver (C), rat lung (D) whole cell lysates.

Please note: All products are 'FOR RESEARCH USE ONLY. NOT FOR USE IN DIAGNOSTIC OR THERAPEUTIC PROCEDURES'.