

Anti-HLA-DOA Antibody

Rabbit polyclonal antibody to HLA-DOA

Catalog # AP60766

Product Information

Application	WB
Primary Accession	P06340
Reactivity	Human, Mouse, Rat
Host	Rabbit
Clonality	Polyclonal
Calculated MW	27599

Additional Information

Gene ID	3111
Other Names	HLA-DNA; HLA-DZA; HLA class II histocompatibility antigen, DO alpha chain; MHC DN-alpha; MHC DZ alpha; MHC class II antigen DOA
Target/Specificity	KLH-conjugated synthetic peptide encompassing a sequence within the center region of human HLA-DOA. The exact sequence is proprietary.
Dilution	WB~~WB (1/500 - 1/1000)
Format	Liquid in 0.42% Potassium phosphate, 0.87% Sodium chloride, pH 7.3, 30% glycerol, and 0.09% (W/V) sodium azide.
Storage	Store at -20 °C.Stable for 12 months from date of receipt

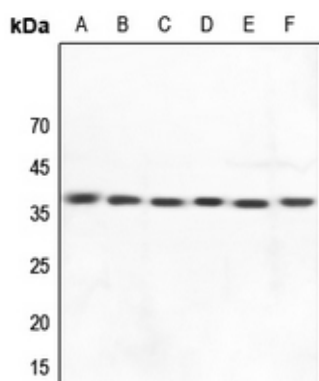
Protein Information

Name	HLA-DOA
Synonyms	HLA-DNA, HLA-DZA
Function	Important modulator in the HLA class II restricted antigen presentation pathway by interaction with the HLA-DM molecule in B- cells. Modifies peptide exchange activity of HLA-DM.
Cellular Location	Endosome membrane; Single-pass type I membrane protein. Lysosome membrane; Single-pass type I membrane protein Note=Complexes with HLA-DM molecule during intracellular transport and in endosomal/lysosomal compartments. Heterotetramerization is necessary to exit the ER

Background

KLH-conjugated synthetic peptide encompassing a sequence within the center region of human HLA-DOA. The exact sequence is proprietary.

Images



Western blot analysis of HLA-DOA expression in K562 (A), MCF7 (B), mouse liver (C), mouse spleen (D), rat liver (E), rat spleen (F) whole cell lysates.

Please note: All products are 'FOR RESEARCH USE ONLY. NOT FOR USE IN DIAGNOSTIC OR THERAPEUTIC PROCEDURES'.