

Anti-NBPF5 Antibody

Rabbit polyclonal antibody to NBPF5

Catalog # AP60770

Product Information

Application	WB, IHC
Primary Accession	Q86XG9
Reactivity	Human, Mouse, Rat
Host	Rabbit
Clonality	Polyclonal
Calculated MW	40546

Additional Information

Other Names	NBPF5; Putative neuroblastoma breakpoint family member 5
Target/Specificity	Recognizes endogenous levels of NBPF5 protein.
Dilution	WB~~WB (1/500 - 1/1000), IHC (1/100 - 1/200) IHC~~WB (1/500 - 1/1000), IHC (1/100 - 1/200)
Format	Liquid in 0.42% Potassium phosphate, 0.87% Sodium chloride, pH 7.3, 30% glycerol, and 0.09% (W/V) sodium azide.
Storage	Store at -20 °C.Stable for 12 months from date of receipt

Protein Information

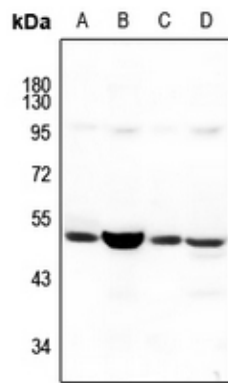
Name	NBPF5P (HGNC:24491)
Synonyms	NBPF5
Cellular Location	Cytoplasm.
Tissue Location	Expressed in brain and medulla.

Background

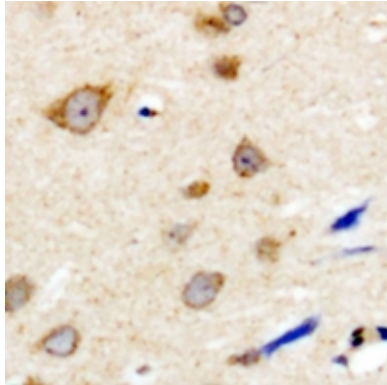
KLH-conjugated synthetic peptide encompassing a sequence within the C-term region of human NBPF5. The exact sequence is proprietary.

Images

Western blot analysis of NBPF5 expression in mouse



brain (A), rat brain (B), MCF7 (C), HeLa (D) whole cell lysates.



Immunohistochemical analysis of NBPF5 staining in human brain formalin fixed paraffin embedded tissue section. The section was pre-treated using heat mediated antigen retrieval with sodium citrate buffer (pH 6.0). The section was then incubated with the antibody at room temperature and detected using an HRP conjugated compact polymer system. DAB was used as the chromogen. The section was then counterstained with haematoxylin and mounted with DPX.

Please note: All products are 'FOR RESEARCH USE ONLY. NOT FOR USE IN DIAGNOSTIC OR THERAPEUTIC PROCEDURES'.