

Anti-NXF3 Antibody

Rabbit polyclonal antibody to NXF3
Catalog # AP60772

Product Information

Application	WB, IHC
Primary Accession	Q9H4D5
Reactivity	Human
Host	Rabbit
Clonality	Polyclonal
Calculated MW	60102

Additional Information

Gene ID	56000
Other Names	TAPL3; Nuclear RNA export factor 3; TAP-like protein 3; TAPL-3
Target/Specificity	KLH-conjugated synthetic peptide encompassing a sequence within the center region of human NXF3. The exact sequence is proprietary.
Dilution	WB~~WB (1/500 - 1/1000), IHC (1/100 - 1/200) IHC~~WB (1/500 - 1/1000), IHC (1/100 - 1/200)
Format	Liquid in 0.42% Potassium phosphate, 0.87% Sodium chloride, pH 7.3, 30% glycerol, and 0.09% (W/V) sodium azide.
Storage	Store at -20 °C.Stable for 12 months from date of receipt

Protein Information

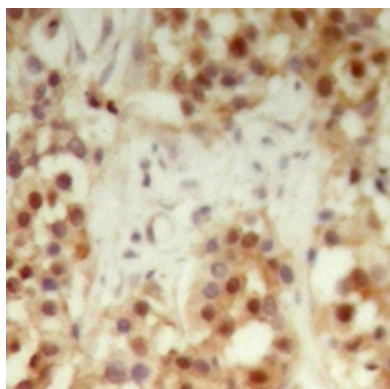
Name	NXF3
Synonyms	TAPL3
Function	May function as a tissue-specific nuclear mRNA export factor.
Cellular Location	Nucleus. Cytoplasm. Note=Shuttles between the nucleus and the cytoplasm
Tissue Location	Expressed at high level in testis and at low level in a small number of tissues

Background

KLH-conjugated synthetic peptide encompassing a sequence within the center region of human NXF3. The exact sequence is proprietary.



Western blot analysis of NXF3 expression in H1688 (A) whole cell lysates.



Immunohistochemical analysis of NXF3 staining in human breast cancer formalin fixed paraffin embedded tissue section. The section was pre-treated using heat mediated antigen retrieval with sodium citrate buffer (pH 6.0). The section was then incubated with the antibody at room temperature and detected using an HRP conjugated compact polymer system. DAB was used as the chromogen. The section was then counterstained with haematoxylin and mounted with DPX.

Please note: All products are 'FOR RESEARCH USE ONLY. NOT FOR USE IN DIAGNOSTIC OR THERAPEUTIC PROCEDURES'.