

Anti-PLA1A Antibody

Rabbit polyclonal antibody to PLA1A
Catalog # AP60774

Product Information

Application	WB
Primary Accession	Q53H76
Other Accession	Q8VI78
Reactivity	Human, Mouse, Rat
Host	Rabbit
Clonality	Polyclonal
Calculated MW	49715

Additional Information

Gene ID	51365
Other Names	NMD; PSPLA1; Phospholipase A1 member A; Phosphatidylserine-specific phospholipase A1; PS-PLA1
Target/Specificity	KLH-conjugated synthetic peptide encompassing a sequence within the C-term region of human PLA1A. The exact sequence is proprietary.
Dilution	WB~~WB (1/500 - 1/1000)
Format	Liquid in 0.42% Potassium phosphate, 0.87% Sodium chloride, pH 7.3, 30% glycerol, and 0.09% (W/V) sodium azide.
Storage	Store at -20 °C.Stable for 12 months from date of receipt

Protein Information

Name	PLA1A (HGNC:17661)
Synonyms	NMD, PSPLA1
Function	Hydrolyzes the ester bond of the acyl group attached at the sn-1 position of phosphatidylserines (phospholipase A1 activity) and 1-acyl-2-lysophosphatidylserines (lysophospholipase activity) in the pathway of phosphatidylserines acyl chain remodeling (PubMed: 10196188). Cleaves phosphatidylserines exposed on the outer leaflet of the plasma membrane of apoptotic cells producing 2-acyl-1-lysophosphatidylserines, which in turn enhance mast cell activation and histamine production (By similarity). Has no activity toward other glycerophospholipids including phosphatidylcholines, phosphatidylethanolamines, phosphatidic acids or phosphatidylinositols, or glycerolipids such as triolein (By similarity).

Cellular Location

Secreted {ECO:0000250|UniProtKB:P97535}.

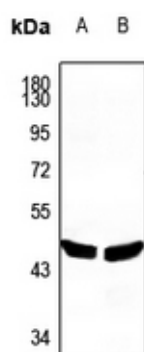
Tissue Location

Widely expressed. Expressed in placenta, prostate and liver. Weakly or not expressed in skin, leukocytes, platelets, colon, spleen, lung, muscle and kidney.

Background

KLH-conjugated synthetic peptide encompassing a sequence within the C-term region of human PLA1A. The exact sequence is proprietary.

Images



Western blot analysis of PLA1A expression in mouse liver (A), rat liver (B) whole cell lysates.

Please note: All products are 'FOR RESEARCH USE ONLY. NOT FOR USE IN DIAGNOSTIC OR THERAPEUTIC PROCEDURES'.