

Anti-PPP4R2 Antibody

Rabbit polyclonal antibody to PPP4R2

Catalog # AP60779

Product Information

Application	WB
Primary Accession	Q9NY27
Reactivity	Human, Mouse, Monkey
Host	Rabbit
Clonality	Polyclonal
Calculated MW	46898

Additional Information

Gene ID	151987
Other Names	Serine/threonine-protein phosphatase 4 regulatory subunit 2
Target/Specificity	KLH-conjugated synthetic peptide encompassing a sequence within the center region of human PPP4R2. The exact sequence is proprietary.
Dilution	WB~~WB (1/500 - 1/1000)
Format	Liquid in 0.42% Potassium phosphate, 0.87% Sodium chloride, pH 7.3, 30% glycerol, and 0.09% (W/V) sodium azide.
Storage	Store at -20 °C.Stable for 12 months from date of receipt

Protein Information

Name	PPP4R2
Function	Regulatory subunit of serine/threonine-protein phosphatase 4 (PP4). May regulate the activity of PPP4C at centrosomal microtubule organizing centers. Its interaction with the SMN complex leads to enhance the temporal localization of snRNPs, suggesting a role of PPP4C in maturation of spliceosomal snRNPs. The PPP4C-PPP4R2-PPP4R3A PP4 complex specifically dephosphorylates H2AX phosphorylated on 'Ser-140' (gamma-H2AX) generated during DNA replication and required for DNA double strand break repair. Mediates RPA2 dephosphorylation by recruiting PPP4C to RPA2 in a DNA damage-dependent manner. RPA2 dephosphorylation is required for the efficient RPA2-mediated recruitment of RAD51 to chromatin following double strand breaks, an essential step for DNA repair.
Cellular Location	Cytoplasm, cytoskeleton, microtubule organizing center, centrosome. Nucleus. Note=Ionizing radiation induces relocalization to nuclear foci and colocalization with RPA2

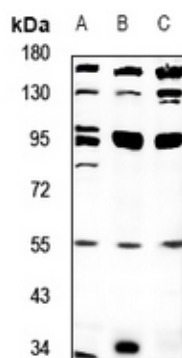
Tissue Location

Widely expressed..

Background

KLH-conjugated synthetic peptide encompassing a sequence within the center region of human PPP4R2. The exact sequence is proprietary.

Images



Western blot analysis of PPP4R2 expression in CT26 (A), P12 (B), HeLa (C) whole cell lysates.

Please note: All products are 'FOR RESEARCH USE ONLY. NOT FOR USE IN DIAGNOSTIC OR THERAPEUTIC PROCEDURES'.