

# Anti-SRSF8 Antibody

Rabbit polyclonal antibody to SRSF8

Catalog # AP60782

## Product Information

---

<b>Application</b>	WB, IHC
<b>Primary Accession</b>	<a href="#">Q9BRL6</a>
<b>Reactivity</b>	Human
<b>Host</b>	Rabbit
<b>Clonality</b>	Polyclonal
<b>Calculated MW</b>	32288

## Additional Information

---

<b>Gene ID</b>	10929
<b>Other Names</b>	SFRS2B; SRP46; Serine/arginine-rich splicing factor 8; Pre-mRNA-splicing factor SRP46; Splicing factor SRp46; Splicing factor, arginine/serine-rich 2B
<b>Target/Specificity</b>	KLH-conjugated synthetic peptide encompassing a sequence within the center region of human SRSF8. The exact sequence is proprietary.
<b>Dilution</b>	WB~~WB (1/500 - 1/1000), IHC (1/100 - 1/200) IHC~~WB (1/500 - 1/1000), IHC (1/100 - 1/200)
<b>Format</b>	Liquid in 0.42% Potassium phosphate, 0.87% Sodium chloride, pH 7.3, 30% glycerol, and 0.09% (W/V) sodium azide.
<b>Storage</b>	Store at -20 °C.Stable for 12 months from date of receipt

## Protein Information

---

<b>Name</b>	SRSF8
<b>Synonyms</b>	SFRS2B, SRP46
<b>Function</b>	Involved in pre-mRNA alternative splicing.
<b>Cellular Location</b>	Nucleus.
<b>Tissue Location</b>	Strongly expressed in pancreas, spleen and prostate. Weakly expressed in lung, liver and thymus

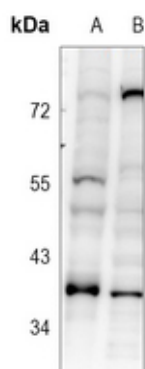
## Background

---

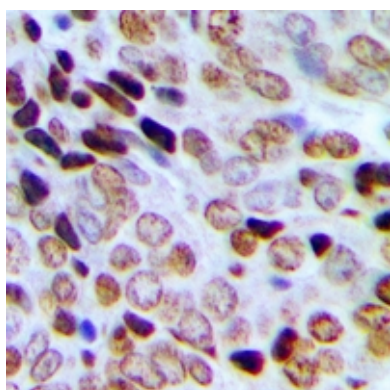
KLH-conjugated synthetic peptide encompassing a sequence within the center region of human SRSF8. The exact sequence is proprietary.

## Images

---



Western blot analysis of SRSF8 expression in Panc1 (A), PC3 (B) whole cell lysates.



Immunohistochemical analysis of SRSF8 staining in human prostate cancer formalin fixed paraffin embedded tissue section. The section was pre-treated using heat mediated antigen retrieval with sodium citrate buffer (pH 6.0). The section was then incubated with the antibody at room temperature and detected using an HRP conjugated compact polymer system. DAB was used as the chromogen. The section was then counterstained with haematoxylin and mounted with DPX.

Please note: All products are 'FOR RESEARCH USE ONLY. NOT FOR USE IN DIAGNOSTIC OR THERAPEUTIC PROCEDURES'.