

Anti-IGFBP1 Antibody

Rabbit polyclonal antibody to IGFBP1

Catalog # AP60790

Product Information

Application	WB
Primary Accession	P08833
Reactivity	Human, Monkey
Host	Rabbit
Clonality	Polyclonal
Calculated MW	27904

Additional Information

Gene ID	3484
Other Names	IBP1; Insulin-like growth factor-binding protein 1; IBP-1; IGF-binding protein 1; IGFBP-1; Placental protein 12; PP12
Target/Specificity	KLH-conjugated synthetic peptide encompassing a sequence within the center region of human IGFBP1. The exact sequence is proprietary.
Dilution	WB~~WB (1/500 - 1/1000)
Format	Liquid in 0.42% Potassium phosphate, 0.87% Sodium chloride, pH 7.3, 30% glycerol, and 0.09% (W/V) sodium azide.
Storage	Store at -20 °C.Stable for 12 months from date of receipt

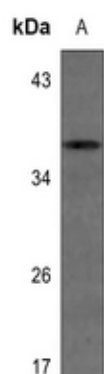
Protein Information

Name	IGFBP1
Synonyms	IBP1
Function	Multifunctional protein that plays a critical role in regulating the availability of IGFs such as IGF1 and IGF2 to their receptors and thereby regulates IGF-mediated cellular processes including cell migration, proliferation, differentiation or apoptosis in a cell-type specific manner (PubMed: 11397844 , PubMed: 15972819). Also plays a positive role in cell migration by interacting with integrin ITGA5:ITGB1 through its RGD motif (PubMed: 7504269). Mechanistically, binding to integrins leads to activation of focal adhesion kinase/PTK2 and stimulation of the mitogen-activated protein kinase (MAPK) pathway (PubMed: 11397844). Regulates cardiomyocyte apoptosis by suppressing HIF-1alpha/HIF1A ubiquitination and subsequent degradation (By similarity).

Background

KLH-conjugated synthetic peptide encompassing a sequence within the center region of human IGFBP1. The exact sequence is proprietary.

Images



Western blot analysis of IGFBP1 expression in U2OS (A) whole cell lysates.

Please note: All products are 'FOR RESEARCH USE ONLY. NOT FOR USE IN DIAGNOSTIC OR THERAPEUTIC PROCEDURES'.