

# Anti-DPD Antibody

Rabbit polyclonal antibody to DPD  
Catalog # AP60792

## Product Information

---

Application	WB
Primary Accession	<a href="#">Q12882</a>
Other Accession	<a href="#">Q8CHR6</a>
Reactivity	Human, Mouse, Rat
Host	Rabbit
Clonality	Polyclonal
Calculated MW	111401

## Additional Information

---

Gene ID	1806
Other Names	Dihydropyrimidine dehydrogenase [NADP(+)]; DHPDHase; DPD; Dihydrothymine dehydrogenase; Dihydrouracil dehydrogenase
Target/Specificity	KLH-conjugated synthetic peptide encompassing a sequence within the center region of human DPD. The exact sequence is proprietary.
Dilution	WB~~WB (1/500 - 1/1000)
Format	Liquid in 0.42% Potassium phosphate, 0.87% Sodium chloride, pH 7.3, 30% glycerol, and 0.09% (W/V) sodium azide.
Storage	Store at -20 °C.Stable for 12 months from date of receipt

## Protein Information

---

Name	DPYD ( <a href="#">HGNC:3012</a> )
Function	Involved in pyrimidine base degradation (PubMed: <a href="#">1512248</a> ). Catalyzes the reduction of uracil and thymine (PubMed: <a href="#">1512248</a> ). Also involved the degradation of the chemotherapeutic drug 5-fluorouracil (PubMed: <a href="#">1512248</a> ).
Cellular Location	Cytoplasm.
Tissue Location	Found in most tissues with greatest activity found in liver and peripheral blood mononuclear cells

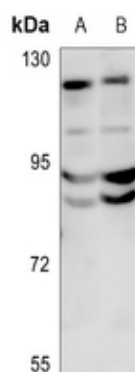
## Background

---

KLH-conjugated synthetic peptide encompassing a sequence within the center region of human DPD. The exact sequence is proprietary.

## Images

---



Western blot analysis of DPD expression in mouse liver (A), rat liver (B) whole cell lysates.

Please note: All products are 'FOR RESEARCH USE ONLY. NOT FOR USE IN DIAGNOSTIC OR THERAPEUTIC PROCEDURES'.