

Anti-CD84 Antibody

Rabbit polyclonal antibody to CD84
Catalog # AP60794

Product Information

Application	WB
Primary Accession	Q9UIB8
Other Accession	Q18PI6
Reactivity	Human, Mouse
Host	Rabbit
Clonality	Polyclonal

Additional Information

Other Names	SLAMF5; SLAM family member 5; Cell surface antigen MAX.3; Hly9-beta; Leukocyte differentiation antigen CD84; Signaling lymphocytic activation molecule 5; CD84
Target/Specificity	KLH-conjugated synthetic peptide encompassing a sequence within the center region of human CD84. The exact sequence is proprietary.
Dilution	WB--WB (1/500 - 1/1000)
Format	Liquid in 0.42% Potassium phosphate, 0.87% Sodium chloride, pH 7.3, 30% glycerol, and 0.09% (W/V) sodium azide.
Storage	Store at -20 °C. Stable for 12 months from date of receipt

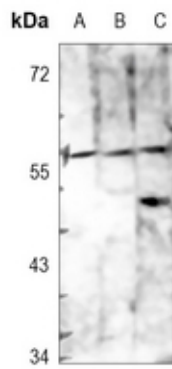
Protein Information

Background

KLH-conjugated synthetic peptide encompassing a sequence within the center region of human CD84. The exact sequence is proprietary.

Images

Western blot analysis of CD84 expression in HEK293T (A), A549 (B), mouse spleen (C) whole cell lysates.



Please note: All products are 'FOR RESEARCH USE ONLY. NOT FOR USE IN DIAGNOSTIC OR THERAPEUTIC PROCEDURES'.